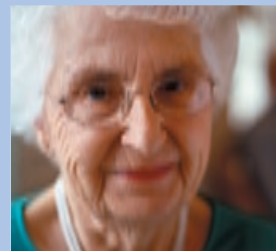




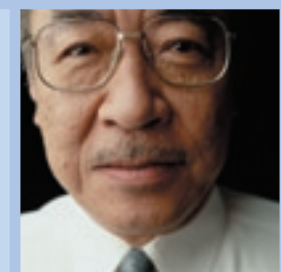
2006

# Leadership CONFERENCE

**HGNI**  
Hartford Geriatric  
Nursing Initiative



**HGNI**  
Hartford Geriatric  
Nursing Initiative



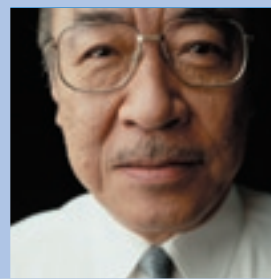
AAN Coordinating Center  
888 17th Street, NW Suite 800  
Washington, DC 20006  
ph: 202-777-1170

[www.geriatricnursing.org](http://www.geriatricnursing.org)



# Agenda

Tuesday, November 14, 2006



## Dear Colleagues,

Welcome to the Sixth Annual Leadership Conference. The John A. Hartford Foundation—in partnership with Atlantic Philanthropies, The Mayday Fund and most recently UnitedHealth Group’s Evercare—continues to generously fund, a major program entitled “Building Academic Geriatric Nursing Capacity” (BAGNC). The focus of this investment is on developing scholars who will advance the quality of health care available nationally to older adults.

One cornerstone of this program is the annual opportunity for shared leadership development (leadership meaning the ability to make a difference). Originally designed for BAGNC Scholars, Fellows and their Mentors, the Annual Leadership Conference expanded over time to include returning alumni/ae and those involved in other geriatric nursing programs funded by the John A. Hartford Foundation; the John A. Hartford Institute at New York University and the “Creating Careers in Geriatric Advanced Practice Nursing” Program under the coordination and administration of the American Association of Colleges of Nursing (AACN).

In August of 2006 UnitedHealth Group’s Evercare Division donated scholarship funds to the Hartford Centers of Geriatric Nursing Excellence (HCGNEs). Newly selected Evercare Scholars from each HCNGE will attend for the first time this year. The overall goals of the Leadership Conference are to:

- Assist the various scholars and fellows to orchestrate full careers
- Facilitate the skills training necessary to build excellence and leadership in gerontology
- Encourage the development of a national network of geriatric nurse leaders/researchers
- Link research to practice and policy changes

The leadership conference occurs just prior to the annual meeting of the Gerontological Society of America (GSA) in order to encourage the aforementioned networking. This year’s leadership conference tackles the dilemma we all face of juggling an assortment of responsibilities and pressures while we strive for in-depth personal excellence and hope to position ourselves for broader influence. We vary in whether we are introverts or extroverts, researchers or clinicians first, yet we are all being urged to change the face of geriatric care in the decades ahead. How should we think about this “balancing act” called career?

*Enjoy!*  
Members, BAGNC Advisory Committee



**8:30–10:15 A.M.**  
(MAJESTIC 1)

### Welcome Breakfast for 2006 Scholars, Fellows and Mentors

Patricia Archbold  
Patty Franklin  
George Huba  
Rachael Watman

**10:30–NOON**  
(MAJESTIC 4 & 5)

### The Mentor-Mentee Relationship

A session designed for 2006 BAGNC Scholars, Fellows and Mentors

Discussion will focus on the opportunities and responsibilities both mentor and mentee incur in the mentoring relationship; topics covered will include being up front about expectations and questions that should be answered early on (time for mentoring, seeking out other mentors, authorship/ownership issues, etc.)

FACILITATOR:  
Angela Barron McBride

**11 A.M.**  
(MAJESTIC 11 FOYER)

### Registration Begins

**12:00–1:30 P.M.**  
(REMINGTON)

### Welcome Luncheon

MISTRESS OF CEREMONIES  
Patricia Archbold  
GREETINGS FROM THE JOHN A. HARTFORD FOUNDATION  
Rachael Watman  
GREETINGS FROM THE MAYDAY FUND  
Christina Spellman  
GREETINGS FROM THE AMERICAN ACADEMY OF NURSING  
Linda Burnes Bolton  
GREETINGS FROM THE JOHN A. HARTFORD INSTITUTE FOR GERIATRIC NURSING  
Elizabeth Capezuti  
INTRODUCTION OF 2006 SCHOLARS & FELLOWS PLUS THE CHARGE FOR THE LEADERSHIP CONFERENCE

**12:30–1:30 P.M.**  
(MAJESTIC 8)

### AACN Welcome Luncheon for Creating Careers Scholars

**1:30–3:15 P.M.**  
(MAJESTIC 1)

### Orchestrating a Research Career

A session designed for 2006 BAGNC Scholars, Fellows and their Mentors but open to all.  
PRESENTATION:  
Angela Barron McBride  
BAGNC ALUMNA/I RESPONSE AND DISCUSSION:  
Chip Bailey  
Karen Tetz

# Agenda

Tuesday, November 14, 2006

# Agenda

Wednesday, November 15, 2006

**1:30–3:00 P.M.**  
(MAJESTIC 6 & 7)

## Poster Set-Up and Communication Consultation

2005 BAGNC Scholars, Fellows and Mentors  
John Beilenson

**1:45–3:00 P.M.**  
(MAJESTIC 4 & 5)

## AACN Creating Careers Welcome Session

MODERATORS:

Eileen Sullivan Marx  
Debbie Latimer

AACN CREATING CAREERS GRADUATE PANEL:

Cecile Davis  
Ughanmwan Efeovbokhan  
Jessica Maddox  
Kate Weigel

**3:00–3:30 P.M.**  
(AUSTIN BALLROOM 2 & 3 FOYER)

## Break

**3:30–5:00 P.M.**  
(AUSTIN BALLROOM 2 & 3)

## Panel I. Balancing Career, Family, and Personal Well-Being

This session will explore how various nursing leaders have sought to balance work and family responsibilities while pursuing (hopefully) healthy lifestyles: When were you most stressed by this balancing act? In hindsight, is there anything that you did to handle competing responsibilities that was particularly smart? In hindsight, is there anything that you did that you would recommend not doing? What tips and/or principles can you share that might be helpful to others?

MODERATOR & SPEAKER:

Angela Barron McBride  
Linda Burnes Bolton  
Daniel Pesut  
Susan Reinhard

BAGNC ALUMNA JOINING PANEL FOR DISCUSSION:

Barbara Rakel

**5:00–5:10 P.M.**  
(MAJESTIC 6 & 7)

## Introduction to the Poster Presentations and Reception

Patricia Archbold  
John Beilenson

**5:10–7:00 P.M.**  
(MAJESTIC 6 & 7)

## Poster Presentations by Class of 2005 and Reception for All

**8:00–9:00 A.M.**  
(HOUSTON A & B FOYER)

## Breakfast

**9:00–10:30 A.M.**  
(HOUSTON A & B)

## Panel II. Juggling Responsibilities: Teaching, Research, Service and Administration

Whether you are a nurse scientist on the faculty of a research-intensive university, a geriatric nurse practitioner working at an academic health center, or an administrator responsible for achieving specific organizational outcomes, you will find yourself juggling a number of responsibilities. In this session, various nurse leaders will recount how they have managed this juggling act, how they tried not to get too fragmented by the various activities/pressures, and what strategies they used to meet competing demands while staying true to their main passion. Should you think differently about this juggling act at different career stages? Was there any advice that you received along the way that was particularly useful?

MODERATOR & SPEAKER:

Cornelia M. Beck

PANEL:

Nancy Bergstrom  
Elizabeth A. Capezuti  
Eileen Sullivan-Marx

BAGNC ALUMNA JOINING PANEL FOR DISCUSSION:

Lisa Kelley

**10:30–11:00 A.M.**  
(HOUSTON A & B FOYER)

## Break

**11:00 A.M.–12:30 P.M.**  
(HOUSTON A & B)

## Panel III. Time Management or “We All Get the Same 24 Hours”

We all only get 24 hours per day, but we vary in how we make use of that time. In this session, nurse leaders will reflect on what strategies they have used to manage their time wisely: What up-front work has enabled you to achieve more later on? How do you “triage” what needs doing so you put most of your energy into your priorities? Are there mindsets that have enabled you to be maximally effective?

MODERATOR & SPEAKER:

May Wykle

PANEL:

Graham McDougall, Jr.  
Ana Valadez  
Pat Yoder-Wise

BAGNC ALUMNA JOINING PANEL FOR DISCUSSION:

Lissi Hansen

**12:45–2:15 P.M.**  
(LONE STAR A3)

## Networking Luncheon

# Agenda

Wednesday, November 15, 2006

**2:30–4:30 P.M.**

(MAJESTIC 6 & 7)

## Concurrent Sessions

**Life after Hartford**  
Patricia Archbold

(MAJESTIC 4 & 5)

**IOM Scholar/Fellow Opportunity**  
Angela Barron McBride

(MAJESTIC 8)

**Nursing Home Initiative**  
Cornelia Beck  
Neville Strumpf

(MAJESTIC 3)

**AACN Creating Careers Concurrent Session**  
Beth E. Barba  
Claudia J. Beverly  
Mary Louise Fleming  
Elizabeth Miller

**5:00–6:00 P.M.**

(HOUSTON A & B)

## The Mary Starke Harper Distinguished Lectureship

**Loretta Ford**  
Interview by Eileen Sullivan-Marx

**6:00–7:30 P.M.**

(HOUSTON C)

## Reception in Honor of Loretta Ford

2006 Mary Starke Harper Distinguished Lectureship Recipient

# Agenda

Thursday, November 16, 2006

**8:00–9:00 A.M.**

(REMINGTON FOYER)

## Breakfast

**9:00–10:30 A.M.**

(REMINGTON)

## Panel IV. Presenting Yourself As A Nurse Leader

The image of nursing has been much discussed in recent years in terms of media portrayals of the profession and nurses' lack of voice and visibility. Since the image of geriatric nursing is in the hands of this conference's attendees, this session will focus on how one presents as a nurse leader: How do you get comfortable with even regarding yourself as a leader, particularly if you're reserved? What attitudes and skills need to be cultivated? Are there core changes in the image of the geriatric nurse that this group should collectively try to effect?

MODERATOR & SPEAKER:

**Neville Strumpf**  
**Billye Brown**  
**Suzanne Gordon**  
**Diana J. Mason**

BAGNC ALUMNA JOINING PANEL FOR DISCUSSION:

**Mary Ellen Dellefield**

**10:30–11:00 A.M.**

(REMINGTON)

## Endnote: Reflections on Leadership

**Rhetaugh G. Dumas**

**11:00–12:00 P.M.**

(REMINGTON FOYER)

## Book Signing

**Suzanne Gordon**

**10:45–12:15 P.M.**

(CITY VIEW 6)

## AACN Creating Careers Closing Session

**10:45–11:45 A.M.**

AACN Scholars will be divided into small interactive groups. Discussions will be led by facilitators Debbie Latimer, Eileen Sullivan-Marx and Joan Stanley.

**11:45–12:05 P.M.**

GSA — Navigational Tips

**12:05–12:15 P.M.**

Closing Remarks

## The AAN Coordinating Center Is Moving!

### NEW INFORMATION:

888 17th Street, NW Suite 800

Washington, DC 20006

ph: 202-777-1170

[www.geriatricnursing.org](http://www.geriatricnursing.org)



## In Memoriam 1920–2006

**T**he Mary Starke Harper Distinguished Lectureship highlights the career of a nurse whose outstanding leadership qualities and achievements serve to inspire others. The person for whom it is named—Mary Starke Harper, RN, PhD, FAAN—is an American Academy of Nursing Living Legend and one of the country’s foremost authorities on mental health and aging.

Harper was born in 1919, when bias and bigotry made it difficult for African Americans such as Harper to pursue the American Dream. But pursue it she did. At the age of seven, living in a small Alabama town along the banks of the Chattahoochee River, Harper augmented the family’s income by ordering chewing gum wholesale and selling it retail—at a higher price per pack. Harper owed her acumen to her successful businessman father, who exhorted her to “Develop your brains; do your homework and do well in school.”

Harper’s outstanding school performance earned her admission to Tuskegee Institute in Alabama, where the family expected her to major in business administration. Although Harper had a head for business she had a heart and a passion for something else: nursing. After earning her nursing diploma, Harper worked at the Veterans Affairs (VA) hospital in Tuskegee, before deciding to make her mark in nursing leadership. Through a government-sponsored program for VA employees, she applied for financial assistance to attend the University of Minnesota only to discover that her supervisor had neglected to process her application. He feared that an African American woman from the Deep South would fail at such a prestigious school. Instead of failing, Harper earned a bachelor’s and master’s degree in psychiatric mental health nursing as well as the distinction of being the first African American student the University of Minnesota had admitted.

Upon her return to Alabama, Harper rose through the ranks of the VA to become director of nursing education. By the time she went to work for the U.S. Department of Health and Human Services (DHHS), Harper had earned a doctorate degree in clinical psychology and medical sociology from St. Louis University. With the DHSS, she coordinated programs in

long-term care for the elderly at the National Institute of Mental Health and founded the National Research and Development Center in Mental Health for Asian-Americans, American Indians, Blacks, and Hispanics.

No fewer than four U.S. Presidents have sought Harper’s counsel, beginning with President Jimmy Carter who tapped her to serve as White House director of the Office of Policy Development and Research for the 1981 conference on aging. Under President Bill Clinton, Mary led an effort to improve public hospitals’ mental health systems. She has served as a member of the National Advisory Council for the National Institute of Health/National Institute of Aging and of the U.S. Surgeon General’s Task Force on Mental Health.

In 2001, in honor of Harper’s significant contributions to mental health, the state of Alabama dedicated its new 126-bed psychiatric hospital for the elderly to her and named it the Mary Starke Harper Geriatric Psychiatry Center. Author of five books and 186 scholarly articles, Harper has advocated for an organized system of support for families who provide long-term care to its elderly members.

Harper spent the last few years at home in Columbus, Georgia, where friends and supporters checked in on her—and still sought her advice. She underscored her comments with the precept that to bring about change it takes faith, prayer, patience, and a willingness to educate.

Mary Starke Harper died at her home July 27, 2006.



Loretta C. Ford,  
EdD, RN, PNP,  
FAAN, FAANP

**U**nheard of before the 1960s, nurse practitioners today play a vital role on the healthcare team. In this nation alone, more than 120,000 nurse practitioners provide care to patients of all ages and at all stages of living and dying. In large part, the nurse practitioner model owes its beginnings and its successes to an esteemed nurse leader: Loretta C. Ford, RN, EdD, FAANP, FAAN.

Ford began her nursing career in the U.S. Air Force. After three years of service, she joined the University of Colorado Schools of Medicine and Nursing, where she earned a doctorate in education and served as Chair and Professor of Public Health Nursing. She also discovered — to her dismay — that the shortage of primary care physicians in the surrounding community undermined care for children and families. A creative thinker, Ford believed that with appropriate training, the nursing role could be expanded to include, for example, well-child exams and patient education, thereby improving health care delivery.

Acting on her beliefs, Ford teamed up with the late pediatrician Henry Silver, MD, in 1965, to implement a pilot nurse practitioner training program. Incorporating research and clinical care training, the model taught nurses to factor in patients’ social, psychological, environmental and economic situations as well as their health status when developing care plans. The program began as a certificate program for students with at least a BS degree in nursing and Ford, herself, completed it to lend credibility to her efforts. It eventually became a master’s degree program and its graduates were called pediatric nurse practitioners.

Ford has said that the nurse practitioner concept at first met with resistance from some — although not all — nursing organizations, nurse educators and physicians. Determined to overcome this resistance, Ford and Silver published the

positive outcomes of their training program in the American Journal of Nursing. They also conducted a survey of health needs that corroborated Ford’s experience as a public health nurse: clinical decision making by nurses improved health care, especially for mothers and children. Ford went on to publish nearly 100 articles about the value of the nurse practitioner, helping to ensure the growth of training programs and graduates throughout the country.

Because of her outstanding work in the pediatric nurse practitioner

program at the University of Colorado, the University of Rochester recruited Ford in 1972 to serve as founding dean of its School of Nursing. Throughout her 14-year tenure Ford developed the unification model of nursing, which integrates clinical practice, education, and research.

**“I believe faculty should be involved in some aspect of practice. In practice you analyze and develop hypotheses about clinical nursing problems that are relevant to improving practice and the study of it.”**

When the University of Colorado at Denver and Health Sciences Center celebrated the 40th anniversary of its nurse practitioner program in 2005, Ford was quoted as saying: “I believe faculty should be involved in some aspect of practice. In practice you analyze and develop hypotheses about clinical nursing problems that are relevant to improving practice and the study of it.”

Ford has received numerous awards throughout her career, including, in 2003, the Elizabeth Blackwell Award from Hobart and William Smith Colleges. Named after America’s first female physician, the award is given to a woman whose life exemplifies outstanding service to humanity. In April 2006, the University of Rochester Medical Center dedicated its new, 28,000-square-foot education wing to Ford, who said she hoped the dedication would inspire more people to go into nursing.

Ford currently lives in Florida with her husband William but travels extensively, addressing nurses and other healthcare provider audiences in the United States and abroad. A pioneer at heart, she reminds her listeners that the expertise of nurses must always cover new territory, expanding to meet real human needs. “Our future is limitless,” she says.

# Speakers

## Pat Archbold, DNSc, RN, FAAN



Dr. Patricia G. Archbold is the Program Director of the John A. Hartford Foundation's Building Academic Geriatric Nursing Capacity Scholars Program based at the American Academy of Nursing. Her academic career has focused on improving the health and health care for older persons and their families. She directed the Hartford Center of Geriatric Nursing Excellence and the National Research

Service Award in Gerontological Nursing prior to stepping into the program director position. Her research focuses on understanding family care for frail elders in ways that are relevant for nursing practice, and on evaluating nursing interventions designed to strengthen family care.

Dr. Archbold is a fellow in the Gerontological Society of America and the American Academy of Nursing; she has served on numerous international and national advisory groups. She and her collaborators have received several research awards including the Doris Schwartz and Helen Nahm Award.

## Donald E. Bailey, Jr., PhD, RN



Donald E. Bailey, Jr. is an Assistant Professor in the Duke University School of Nursing and has recently completed a John A. Hartford Foundation post-doctoral fellowship. He received his PhD from the University of North Carolina at Chapel Hill in 2002 and his research program has focused on older men with prostate cancer or adults with chronic hepatitis C who elect watchful waiting. He has developed and tested a psycho-educational intervention that uses cognitive reframing techniques to help prostate cancer patients who live with the uncertainty associated with watchful waiting.

Currently, he is conducting a 2-year longitudinal study of men diagnosed with prostate cancer who elect watchful waiting and has recently been funded by the NINR to conduct a 3-year longitudinal study of patients with chronic hepatitis C who are watching and monitoring their disease. Dr. Bailey is a co-investigator on Dr. Ruth Anderson's study designed to describe management practices in nursing homes and Dr. Eleanor McConnell's translational research team, which has developed and tested an instrument to assess staff readiness to adopt evidence-based practices in long-term care.

Dr. Bailey teaches Gerontological nursing and his course was recognized in 2004 by the AACN/John A. Hartford Foundation Institute for Geriatric Nursing as the Best Stand Alone Geriatric Nursing Course in Baccalaureate Education.

## AACN Beth Barba, PhD, RN

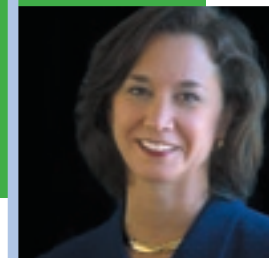


Dr. Beth Barba is an Associate Professor at The University of North Carolina at Greensboro School of Nursing. She holds a Master of Arts in Nursing Science and a PhD in Nursing Research and Theory Development from New York University. Dr. Barba has been active in gerontological nursing research and education for over 15 years. She was a Hartford Institute for Geriatric Nursing Research Scholar and a John A Hartford Post-Doctoral Fellow at Duke University and University of Arkansas Medical Sciences.

Her research agenda is focused on the effects of companion animals on nursing home residents with dementia. She is a Fellow in the Association for Gerontology in Higher Education. She was Project Director for an AACN/John A. Hartford *Enhancing Gerontological/Geriatric Nursing for Undergraduate Programs* project and for two HRSA funded *Comprehensive Geriatric Education Project* awards. Dr. Barba has served as Senior Advisor for Education Initiatives at the Hartford Institute for Geriatric Nursing and as expert consultant in geriatric curriculum at several universities. She has presented numerous papers at professional conferences, serves on the editorial board of the *Journal of Gerontological Nursing*, and is active in the Southern Region Coalition of Geriatric Nurse Educators.

# Speakers

## Cornelia Beck, PhD, RN, FAAN



Dr. Beck is Professor in the Department of Geriatrics and Department of Psychiatry, in the College of Medicine, and Professor in the College of Nursing at the University of Arkansas for Medical Sciences in Little Rock, Arkansas.

Dr. Beck received her Ph.D. in nursing from Texas Woman's University, Denton, Texas in 1978. Dr. Beck has conducted research with cognitively impaired elderly since 1984 and has numerous publications in this area. She is the recipient of multiple grants from

NIH and various foundations. Dr. Beck has served on the Mental Disorders of the Elderly Study Section at NIH, the National Advisory Council for the National Institute of Nursing Research, and the NIH Nursing Research Study Section. She currently serves on the Medical and Scientific Advisory Council of the Alzheimer's Association. Dr. Beck received the Distinguished Contribution to Nursing Science Award from the American Nurses Foundation, the Doris Schwartz Gerontological Nursing Research Award and the National Gerontological Nursing Association Lifetime Achievement Award. She has also received the Gerontological Nurse of the Year Award from the Arkansas Nurses Association.

## John Beilenson, MA



John Beilenson is President of Strategic Communications and Planning, a private consulting firm that uses communications as a vehicle to transform non-profit and public institutions, drive changes in professional practice, and affect social policy.

For more than a decade, he has provided communications consulting, strategic planning, training, web development and writing services while developing a specialty in aging research, geriatrics, and aging issues. Current or recent clients include the American Federation for Aging Research, the John A.

Hartford Foundation, the Hartford Geriatric Social Work Practicum Development Program at the New York Academy of Medicine, The Mather Institute on Aging, Grantmakers in Aging, the AdvantAge Initiative of the Visiting Nurse Service of New York, DOROT, and the Institute for Medicare Practice. He is also the Project Director of Infoaging.org, a Web site sponsored by the American Federation for Aging Research.

Beilenson served as an instructor in Communications Studies at the University of North Carolina-Chapel Hill, teaching "Public Speaking" and the "Rhetoric of Social Movements." He also developed and co-directed the North Carolina Media Institute, which trains grass-roots activists in advocacy and communications skills.

## Nancy Bergstrom, PhD, RN, FAAN



Nancy Bergstrom is the Theodore J. and Mary E. Trumble Professor of Aging Research and Director of the Center on Aging at the University of Texas Health Science Center in Houston. She received her Ph.D. in Clinical Nursing Research from the University of Michigan.

Her research testing and developing the Braden Scale for Predicting Pressure Sore Risk is continuing to support improved nursing practice. Dr. Bergstrom served as President of the Midwest Nursing Research Society, Chair

of the American Nurses Association's Council of Nurse Researchers and Chaired two Agency for Health Care Policy and Research panels developing guidelines for the Prediction and Prevention of Pressure Sores and for the Treatment of Pressure Sores. Dr. Bergstrom has published widely and received numerous awards including the Sigma Theta Tau Baxter Foundation Episteme Award recognizing her contribution for a major breakthrough in nursing knowledge development. Her most current work focuses on nursing interventions to prevent pressure ulcers in at risk patients for which she recently submitted an R01. She serves as a consultant to several projects aimed at translating knowledge into evidence based practice to improve patient outcomes including one project for CMS.

# Speakers

## AACN Claudia Beverly, PhD, RN, FAAN

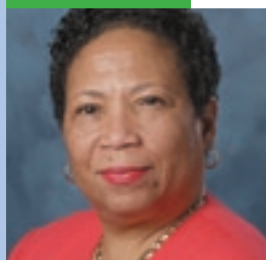


Claudia Beverly is Director of the Hartford Center of Geriatric Nursing Excellence at the University of Arkansas for Medical Sciences (UAMS) College of Nursing. She is the Associate Director of the \$28.8 million Donald W. Reynolds Institute On Aging and Department of Geriatrics.

Dr. Beverly is Professor in the UAMS Colleges of Nursing and Medicine, and Associate Professor in the College of Public Health. She serves as Director of the Arkansas Aging Initiative, which includes a network of seven Centers on Aging statewide that provide improved care to older

persons throughout Arkansas through quality geriatric healthcare and education. Dr. Beverly is serving her fourth year as a member of the National Advisory Council for Nursing Education and Practice that advises the Division on Nursing in the Bureau of Health Professions in the Department of Health and Human Services. She is also a member of the National Commission to study the nursing workforce issue in long-term care, a project of AHCA. She is one of the founding members of the Arkansas Coalition for Nursing Home Excellence. Dr. Beverly's areas of specialty and research interests include geriatrics and community-based systems of healthcare and social service delivery. She serves as a mentor for doctoral students interested in health policy and leadership.

## Linda Burnes Bolton, DrPH, RN, FAAN



Linda Burnes Bolton is Vice President for Nursing and Chief Nursing Officer and Director of Nursing Research at Cedars-Sinai Medical Center in Los Angeles, California and one of the Principal Investigators at the Cedars-Sinai Burns & Allen Research Institute. Her research, teaching, and clinical expertise

includes: functional health literacy for African Americans and other ethnic and racial communities; quality of care in racially and ethnically diverse communities; cultural diversity in leadership; eliminating structural and racial barriers as a solution to eliminating health disparities; and, cultural

diversity and health care overall.

Dr. Burnes Bolton is the current President of the American Academy of Nursing and is a member of the American Nurses Association, the American Organization for Nurse Executives, Association of California Nurse Leaders; Center for Nursing Leadership, National Black Nurses Association and the National League for Nursing.

She has held board and officer positions for several national organizations and is the recipient of numerous awards for her scholarly and world community service. She chairs the National Advisory Committee for the Robert Wood Johnson Foundation initiative to Transform Care at the Bedside (TCAB). She is as an Associate Clinical Professor at UC, San Francisco and UCLA Schools of Nursing.

## Billye J. Brown, EdD, RN, FAAN



Dr. Brown was the Dean of The University of Texas at Austin School of Nursing from 1972 until her retirement from that position on August 31, 1989. Since 1989, she has worked as a Consultant and Associate with Tuft & Associates, an Executive Search firm. She is a Fellow of the American Academy of Nursing.

At the 1987 Sigma Theta Tau International Biennial Convention, Dr. Brown was elected President Elect and she served as President 1989-1991.

St. Louis University presented her with the Alumni Merit

Award in 1981. In 1985, Epsilon Theta Chapter of STTI presented her with the Chapter's Mentor Award. In 1990 she was recognized by the American Association of Colleges of Nursing with the Sister Bernadette Armiger Award. In November 2002, Dr. Brown was presented the President's Award, by the American Academy of Nursing for her support of the original Magnet Hospital research.

The content of Dr. Brown's publications and presentations pertain to academic administration, leadership and followership, strategic planning, resource development, and history and trends in health care. She also consults with Schools, Colleges, and Universities in executive searches, recruitment of faculties, private fund-raising, organization leadership and management of nursing programs.

# Speakers

## Elizabeth Capezuti, PhD, RN, FAAN



Elizabeth Capezuti is an Associate Professor at New York University College of Nursing. She also serves as Co-director for the John A. Hartford Foundation Institute for Geriatric Nursing at New York University, where she directs the NICHE (Nurses Improving the Care of

Healthsystem Elders) and the Geriatric Nursing Research Scholars programs. Dr. Capezuti received her doctoral degree in nursing from the University of Pennsylvania in 1995 and is a nationally certified Geriatric Nurse Practitioner. She has also been on the faculty of the University of Pennsylvania School of Nursing from 1984 through 2000 where she received the 1995 Provost's Award

for Distinguished Teaching. From 2000 to 2003 she held the Independence Foundation Wesley Woods Chair in Gerontologic Nursing at Emory University. Dr. Capezuti's program of research focuses on the development and testing of interventions aimed at improving care of frail older adults. Findings from her research have been used to draft both state legislation and federal regulations related to nursing home care. She serves on several national boards and has been a consultant to the Hospital Bed Safety Workgroup of the United States Food and Drug Administration and the Center for Medicare and Medicaid Services. Dr. Capezuti has published extensively in the areas of fall prevention, restraint and side rail elimination, elder mistreatment and legal liability issues. She is a Fellow of the American Academy of Nursing, the Gerontological Society of America, the American Association of Nurse Practitioners, and the New York Academy of Medicine.

## AACN Cecile Davis, RN, MSN

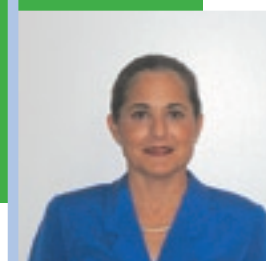


Cecile Davis is a 2003-2004 Hartford Scholar from George Mason University. She has been a registered nurse for 24 years and is presently working in Arlington Virginia at the Virginia Hospital Center. She works in cardiopulmonary rehabilitation, where she is responsible for managing

cardiac and pulmonary patients through prescribed rehabilitation. She recently became the heart failure case manager for the hospital where she can combine her love for geriatrics and heart patients. In addition, she is

a co-leader of the acute myocardial infarction quality improvement program, and teaches Geriatrics in the acute care setting to the nurses in the medical-surgical fellowship. Two years ago, she initiated the committee for falls prevention, and continues to participate as a member. She has also participated in various committees that relate to geriatric issues, and presently serves on the clinical practice committee that reviews hospital-wide nursing policy and procedures. Cecile's recent significant accomplishments include achieving Advanced Clinical Level V status at her hospital in 2006 and being recognized as the runner up in the Nursing Spectrum Clinical Excellence Award for her work on falls prevention, geriatric education for nursing, and Acute Myocardial Infarction core measures.

## Mary Ellen Dellefield, PhD, RN



Mary Ellen Dellefield is a Research Nurse at VA San Diego Healthcare System (VASDHS) and an Adjunct Research Assistant Professor at the School of Nursing, San Diego State University. Dr. Dellefield has

practiced as a Director of Nursing and various clinical roles in nursing homes over the past 20 years. She was a 2004-2006 BAGNC Fellow. Dr. Dellefield is developing a program of research on evidence-based management practices to support evidence-based clinical practices in nursing homes. She has received funding from AHRQ and VHA.

# Speakers

## Rhetaugh Graves Dumas, PhD, RN, FAAN



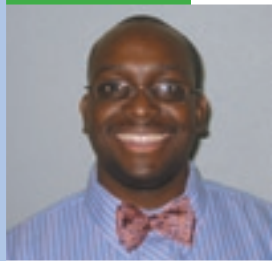
**D**r. Dumas is Vice Provost, Emerita; Dean and Professor of Nursing, Emerita, University of Michigan; and Professor, Department of Nursing Systems, University of Texas School of Nursing at Houston. She holds a BS from Dillard University, MS from Yale University, PhD from the Union Institute and honorary doctorates from eleven universities.

Dr. Dumas is a charter member and former President of AAN; member of the Institute of Medicine, NAS; fellow of the A.K. Rice Institute; and she was a member of President

Clinton's National Bioethics Advisory Commission.

Dr. Dumas held prominent positions in academic institutions, health care systems, governmental agencies, and national professional associations and blazed a trail of "firsts" for nurses, women, and African Americans. Especially notable are her pioneering research projects in the 1960s, which established her as the first in nursing to use a randomized experimental design to study clinical problems in patient care. She was the first African American woman to be tenured at Yale University; the first nurse to serve as Deputy Director of NIMH; and the first African American to be elected President of the National League for Nursing. She was the first nurse in NAS' Portrait Collection of African Americans in Science, Engineering and Medicine.

## AACN Ughanmwan Tokunbor Efeovbokhan, APRN, MSN, GNP



**U**ghanmwan Tokunbor Efeovbokhan (TK) has been a geriatric nurse practitioner for over 2 years, and is a devoted husband and father. TK was born in New Haven, Connecticut and raised in Lagos, Nigeria. He returned to America at the age of seventeen

and obtained certification as a nurse's aide. A year later, he obtained certification as a Licensed Vocational Nurse and worked as in the home health and nursing home industries for six years. TK returned to school and obtained his bachelor's and Master's degree from the University of Texas Health Science Center in San Antonio, Texas. He is currently working on his PhD as a clinical nurse scientist and works for the department of community medicine at the Health Science Center.

## AACN Mary Louise Fleming, MSN, RN



**M**ary Louise is a John A. Hartford Foundation BAGNC Scholar at the University of California, San Francisco. Her research focuses on understanding nursing home leadership from the perspective of directors of nursing. Pilot study findings were presented at GSA in 2004. A diploma graduate,

she has a MSN in psychiatric nursing from the University of Alabama, Birmingham where she taught for three years.

In her career with the San Francisco Public Health Department, Mary Louise directed major programs and developed progressive work environments for interdisciplinary

teams. She developed CNS positions for the forensic youth system, directed the opening of a psychiatric rehabilitation facility, and helped transform an 1100-bed skilled nursing facility. This work received awards from the California Healthcare Association in 2001 and the "Outstanding Partner of the University of California, School of Nursing" John A. Hartford Foundation Award at the American Association of Colleges of Nursing meeting in 2003.

Mary Louise has published and presented nationally and internationally. She was selected for the 2001 Robert Wood Johnson Executive Nurse Fellows Program cohort, received the 2002 "Nursing Excellence Award for Advancing the Profession" from *Nurseweek*, California, and holds honorary membership in the University of the Philippines Nursing Alumni Association.

# Speakers

## Loretta C. Ford, RN, EdD, PNP, FAAN, FAANP



**D**r. Loretta C. Ford, Dean and Professor Emerita, School of Nursing, University of Rochester, is an internationally known nursing leader. She has devoted her career to practice, education, research, consultation and influencing health services, community health and military

nursing. Dr. Ford's studies on the nurse's expanded scope of practice in public health nursing, her specialty, led to the creation of the first Pediatric Nurse Practitioner model of advanced practice at the University of Colorado

Medical Center. Dr. Ford's advanced degrees were earned at the University of Colorado Schools of Nursing and Education. She holds Honorary Doctorates from six prestigious Universities and myriads of awards. She has authored over one hundred publications on the history of the Nurse Practitioner, Unification of Practice, Education, and Research, and Issues in Advanced Nursing Practice and Health Care. Currently, Dr. Ford consults and lectures on the historical development of the Nurse Practitioner and on issues in Advanced Nursing Practice and Health Care Policy.

■ Dr. Ford is this year's recipient of the Mary Starke Harper Distinguished Lectureship Award. A more complete bio can be found on the dedication page.

## Suzanne Gordon



**S**uzanne Gordon has been a freelance journalist and author since 1970. Ms. Gordon writes about political culture, women's issues, nursing, and health care. She is the author of six books, co-editor of four others, and co-author, with Bernice Buresh, of *From Silence to Voice: What Nurses Know and Must Communicate to the Public*,

published by the Cornell University Press. *From Silence to Voice* won a best book of the year award in 2000 from *The American Journal of Nursing*. For almost 20 years, she has been observing

nurses and other caregivers in hospitals and health care institutions across the country and writing about care giving and health care reform issues.

With Sioban Nelson, Ms. Gordon is editor of a new book series on the *Culture and Politics of Health Care Work* published by Cornell University Press. Their most recent publication in the series is *The Complexities of Care — Nursing Reconsidered*.

Ms. Gordon's recent book, *Nursing Against the Odds*, was published by Cornell University Press in May of 2005. It has won three 2005 Book of the Year Awards from the *American Journal of Nursing* and a Golden Lamp Award from the Center for Nursing Advocacy.

## Lissi Hansen, PhD, RN



**D**r. Hansen is an Assistant Professor at the Oregon Health & Science University School of Nursing. Her area of teaching is end-of-life care and her research focuses on decision making at the end-of-life. In 2005, she was the recipient of the Geriatric Nursing Research

Award from the Western Institute of Nursing in partnership with the Hartford Institute for Geriatric Nursing.

Dr. Hansen received her first nursing degree in Denmark, her BSN from Washington State University, and her PhD from Oregon Health & Science University. She completed a John A. Hartford Foundation Postdoctoral Fellowship in 2003 at the University of Washington. During the fellowship, Dr. Hansen completed the Program in Palliative Care Education and Practice from the Harvard Medical School Center for Palliative Care.

# Speakers

## George J. Huba, PhD



**G**eorge J. Huba, President of The Measurement Group LLC, is a California-licensed psychologist specializing in program evaluation, psychological measurement and testing, health services strategic planning, and management consulting.

Dr. Huba is a 1977 graduate of the Ph.D. Program in Psychology at Yale University and is a Fellow of Divisions 5 (Evaluation, Measurement, and Statistics) and 50 (Addictive Behaviors) of the American Psychological Association and also a Fellow of the Association for Psychological Science. Dr. Huba formerly served as the

Associate Director of the UCLA Center for the Study of Adolescent Drug Abuse Etiologies. Dr. Huba has held faculty appointments at the University of Minnesota and UCLA. Prior to founding The Measurement Group, Dr. Huba was Vice President of Research and Development for Western Psychological Services, a publisher of psychological and educational tests.

Dr. Huba has several hundred publications on methodology, program evaluation, and psychological testing, as related to health care, substance abuse etiologies and treatment, mental health services, and HIV/AIDS treatment. Dr. Huba has been on the editorial boards of more than a dozen journals including the *Journal of Gerontology and Educational and Psychological Measurement*.

## Lisa S. Kelley, PhD, RN, MA

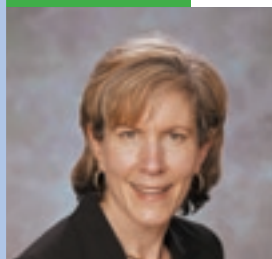


**L**isa Skemp Kelley, a 2003–2005 John A. Hartford Foundation Building Academic Geriatric Nursing Capacity Scholar, is an Assistant Professor in the Adult and Gerontological Nursing Area of Study at the University of Iowa and the 2006 Honorary Chair of the Iowa Observance

of United Nations Day. Her BSN is from Viterbo College in La Crosse, Wisconsin and her MA is in the areas of Community Health and Nursing Education. She received a PhD in Gerontological Nursing from the University of Iowa College of Nursing. Her nursing practice has included

gerontological nursing, public health, and acute care. Dr. Kelley's research began in the area of family caregiving for elders with Alzheimer's disease. To better understand the elder, family, and community perspectives in natural elder care systems, her dissertation research was conducted on a Caribbean island in which she explored how community-dwelling elders acquired the things they need to live. Currently, she has two projects within her program of research: 1) a pilot study for comparative research on natural elder care systems in the rural Midwest, and 2) a partnership grant with the St. Lucian Ministry of Health to develop a cross-cultural gerontological nurse certification program. This island-wide pilot program has a long-term goal of developing global nurse leaders in gerontological nursing.

## AACN Debbie Latimer, LCSW



**D**ebbie Latimer, gerontology project manager at AACN, works closely with Deirdre Thornlow and Jessica Kingsborough administering the JAHF geriatric nursing education grants. She recently became manager of the Creating Careers project. Before joining

the AACN team in October of 2003, she worked for 13 years in non-profit organizations. During that time, she functioned in several senior positions, most recently as Case Manager and Community Outreach Specialist for a non-profit traumatic brain injury case management provider. She became licensed as a clinical social worker in the Commonwealth of Virginia in 1988. She received her MSW from the George Warren Brown School of Social Work at Washington University, St. Louis, MO. She earned her BA from Washington University as well.

# Speakers

## AACN Jessica Maddox, MSN, GNP



**J**essica Maddox graduated with honors from Rutgers University of New Jersey with a BSN in May, 2003. From there she went on to attend the University of Pennsylvania where she pursued a Masters in Nursing. She finished in December 2004 as a Nurse Practitioner specializing in

geriatrics. She worked in the hospital for 2 years, but found

that the long-term care setting was the best fit for her. She currently works for Evercare, a company that places NP's in various nursing homes to deliver direct care to geriatric patients on a daily basis. The goal is to promote wellness and decrease unnecessary hospitalizations. Honors include: John Hartford Geriatric Scholar, Wealtha McGurn Research Award, Rutgers University Outstanding Nurse Award. She was recently nominated by my company for a SAGE award given to an NP that displays wisdom and innovation in the care delivered to their patients. She is also a member of Sigma Theta Tau as well as the American Geriatrics Society.

## Diana J. Mason, PhD, RN, FAAN



**D**iana J. Mason is Editor-in-Chief of the *American Journal of Nursing*, the oldest and largest circulating nursing journal in the world. Under her leadership, the journal has received numerous awards including the Clarion Award for Best Overall External Magazine (circulation of 100,000

to 500,000) in 2003; the 2004 Publication Management Magnum Opus Gold Award and Sigma Theta Tau's Pinnacle Award (Nursing Print Media) for the Palliative Nursing series; and awards for public dissemination of its work from the American Academy of Nursing and Sigma Theta Tau International Nursing Honorary Society. Dr. Mason is the

co-editor of the book, *Policy and Politics in Nursing and Health Care*; now in its fifth edition.

As a researcher, Dr. Mason published a series of studies on managed care arrangements with nurse practitioners, as well as studies of human rhythms in health and illness. Since 1986, she has been one of the Producers and Moderators of "Healthstyles", a weekly, live radio program in New York City that has received media awards from the State of New York, Public Health Association of New York City, American Academy of Nursing, and the National Association of Childbirthing Centers. She was project director for the WBAI-Global Kids' Sound Partners for Community Health Initiative (funded by the Benton and Robert Wood Johnson Foundations) to train New York City youth in producing radio programs on preventing teen substance abuse.

## Angela Barron McBride, PhD, RN, FAAN



**A**ngela Barron McBride is Distinguished Professor-University Dean Emerita at Indiana University School of Nursing. During her tenure as dean, she served as Senior Vice President for Academic Affairs-Nursing within Clarian Health Partners, the largest hospital network in Indiana and one of

the largest in the United States. Currently, she is a member of the Clarian Board, and chairs the board's Committee on

Quality and Patient Care. She served as president of Sigma Theta Tau International (1987–1989) and of the American Academy of Nursing (1993–1995). Dr. McBride is known for her contributions to women's health. She is a fellow of the American Psychological Association's Division 35 (women's health) and Division 38 (health psychology) and received the latter's "Outstanding Contributions to Nursing and Health Psychology" Award in 1995; that same year, she was elected to membership in the Institute of Medicine. Since 2000, she has facilitated the leadership conference of the Building Academic Geriatric Nursing Capacity Program. In 2006, she was named a "Living Legend" by the American Academy of Nursing.

# Speakers

## Graham J. McDougall, PhD, RN, FAAN



**G**raham J. McDougall, Professor of Nursing, is interested in cognitive aging and health promotion. Dr. McDougall's program of research has been conducted over the last fifteen years. The emphasis of his research is on modifying risk factors and developing interventions to improve the everyday memory function of older adults. This includes the effects of physical, emotional, and control beliefs on subjective and objective memory performance. Initial

correlational studies were designed to identify modifiable affective and cognitive factors affecting metamemory (subjective awareness) and memory (objective performance). More recently, interventions were designed to improve the everyday memory of older adults. The various research projects have been funded from the National Institutes on Aging, National Institute of Mental Health, and National Institutes of Nursing Research. Currently, he is completing a 5-year (2001–2006) an NIA-funded study to test the effects of the Cognitive Behavioral Model of Everyday Memory intervention against a health promotion intervention on memory performance and memory self-efficacy, and its ultimate effect on instrumental activities of daily living.

## Elizabeth Miller, MSN, MBA, ARNP



**D**r. Elizabeth Miller joined Evercare, a division of UnitedHealth Group, in 2004 and is currently the Director of Health Services for Evercare, Gulf Coast. In this position, she provides strategic direction and oversees a staff of 50 clinicians providing care to frail and elderly individuals enrolled in Evercare's Medicare and Medicaid products. Prior to joining Evercare, she worked as a project manager

for HCR-ManorCare and as a Nurse Practitioner for the Presbyterian Foundation, operators of an urban nursing home chain in Philadelphia. She also spent five years as an Oncology-Hematology nurse at Pennsylvania Hospital. Elizabeth holds Bachelor's and Masters degrees in Nursing from the Nursing School of the University of Pennsylvania and a Masters in Business Administration from the Wharton School of the University of Pennsylvania.

## Daniel J. Pesut, PhD, RN, FAAN



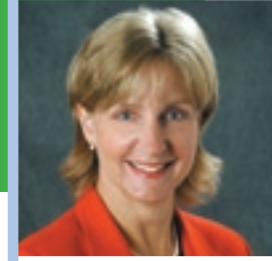
**D**r. Pesut is currently Professor of Nursing and Associate Dean for Graduate Programs at Indiana University School of Nursing. Dr. Pesut holds a doctorate in Nursing from the University of Michigan. He received his MS in psychiatric mental health nursing from the University of Texas Health Science Center, San Antonio, and his BS in nursing from Northern Illinois University. In addition, he holds a certificate in management development from the Harvard Institute for Higher Education.

Dr. Pesut is the immediate past President (2003–2005) of the Honor Society of Nursing, Sigma Theta Tau International.

He is a Fellow in the American Academy of Nursing, and a board certified advanced practice registered nurse in adult psychiatric mental health nursing. He is the recipient of many awards including an Army Commendation Award while on active duty (1975–1978) in the US Army Nurse Corps; Sigma Theta Tau International Edith Moore Copeland Founder's Award for Creativity; The American Assembly for Men In Nursing Luther Christman Award; and Distinguished Alumni Awards from several universities. He has received distinguished teaching Awards, Excellence in Leadership and Excellence in Mentoring Awards, and numerous distinguished Service Awards. Dr. Pesut is a popular author, speaker and consultant, internationally known for his work in nursing education and research including creative-teaching learning methods related to self-regulation of health, clinical reasoning, futures thinking and leadership development.

# Speakers

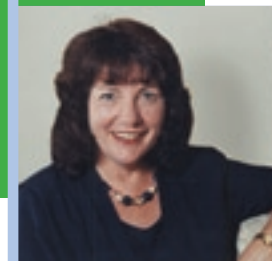
## Barbara Raket, PhD, RN



**B**arbara Raket is an Assistant Professor at the University of Iowa, College of Nursing and was a 2003-2005 BAGNC Fellowship Award recipient. She received her BSN, MA, PhD all at the University of Iowa, and completed a postdoctoral study at the university in

2005 on Hyperalgesia Measurement in Postsurgical Elders. She currently has a Marsha and Ralph Congdon Faculty Development Fellowship to test the effectiveness of high and low frequency TENS to placebo and gender/age matched controls on hyperalgesia, pain, and function in subjects with mild osteoarthritis. Dr. Raket has published numerous articles and studies, most recently on postoperative pain management.

## Susan C. Reinhard, PhD, RN, FAAN



**S**usan C. Reinhard is the Co-Director of the Rutgers Center for State Health Policy. She is a nationally recognized leader in long term care policy, practice, and research, with a strong focus on bridging these arenas. She directs the Community Living Exchange funded by the Centers for Medicare & Medicaid and is the National Program Director for the RWJ "State Solutions" program. As Deputy Commissioner of the NJ Department of Health and Senior Services, Dr. Reinhard consolidated policy and funding for senior services, secured significant funding to initiate consumer direction in

home care programs, spearheaded the Community Choice Counseling program to transition people out of nursing homes back into their communities, and directed the statewide pharmaceutical assistance program. She co-founded the Institute for the Future of Aging Services in Washington, DC and served as its Executive Director of the Center for Medicare Education. Her research and policy expertise includes consumer choice and control in health and supportive care, family caregiving, development of assisted living and other community-based care options, quality improvement in long-term care, health care workforce development and regulation, state pharmaceutical policy, and medication safety. She is a former faculty member at the Rutgers College of Nursing and is an AAN Fellow. She holds a MS in nursing from the University of Cincinnati, and a PhD from Rutgers University.

## Christina Spellman, PhD



**C**hristina Spellman is currently Executive Director of The Mayday Fund in New York City. Mayday is a small family foundation dedicated to alleviating the incidence, degree and consequence of human physical pain. The Fund was created by the children of Shirley Steinman Katzenbach in 1992. She is the second Executive Director and is responsible for overseeing the program of charitable giving on behalf of the Trustees of the Fund, as well as the day-to-day administration of the Fund. The grants budget for

2006 is close to \$1 million with additional program related expenses. The foundation is active in the United States and Canada. While at Mayday, Ms. Spellman has become familiar with various disciplines in medicine that address pain and its relief and represents the Fund at professional meetings. One of the goals of the Mayday Fund Trustees is to bring other funders to the table in support of pain programs. To date, Mayday has partnered with the Milbank Memorial Fund, The John A. Hartford Foundation and the Milbank Rehabilitation Foundation. Mayday is a member of the Council on Foundations and the New York Regional Association of Grantmakers. The Mayday Fund maintains an interest in the public policy debates surrounding the medical care of pain.

# Speakers

## AACN Joan Stanley, PhD, RN, CRNP, FAAN



Joan Stanley, Director of Education Policy since 1994, leads the development of nursing education policy and curriculum at the American Association of Colleges of Nursing (AACN). Dr. Stanley has served on numerous AACN Task Forces, including the Clinical Nurse Leader Implementation Task Force and the Task Force on the Essentials for the DNP. Dr. Stanley also has published and presented extensively on education policy. Currently, she serves on the editorial board for the

Journal for Nurse Practitioners. Dr. Stanley has received a number of awards, including fellowship in the American Academy of Nursing, the National Health Service Corps Director's Award in 1997; recognition for commitment to improving nursing care to older adults by the John A. Hartford Foundation Institute for Geriatric Nursing in 1998; and recognition for leadership to the profession of nursing from the Department of Veterans Affairs, VHA in 2000. A practicing adult nurse practitioner since 1973, Dr. Stanley served as President and Board member of the Maryland NP organization from 1978-1982 and again from 1998-2001. Dr. Stanley also maintains a practice as an adult nurse practitioner at the University of Maryland Hospital Faculty Practice Office.

## Neville Strumpf, PhD, RN, FAAN



Dr. Strumpf is the Edith Clemmer Steinbright Professor in Gerontology at the University of Pennsylvania School of Nursing. Known for her teaching expertise at all levels, Dr. Strumpf was the Director of the Gerontology Nurse Practitioner Program from 1985-2000, which was named first nationally among gerontology programs in U.S. News & World Report rankings in 1998 and 2001. Currently, Dr. Strumpf is the Director of the Hartford Center of Geriatric Nursing Excellence and the Center for Gerontologic Nursing Science.

Dr. Strumpf is a widely acclaimed researcher, best known for work with colleague, Dr. Lois Evans. Dr. Strumpf has also been the PI and Co-PI of 5 NIH studies, not only on a restraint free care, but also on falls, aging refugees and their families, and home care interventions for elderly cancer patients. Her current research focuses on palliative care.

Dr. Strumpf has received numerous honors for her contributions to the field of gerontology, including the American Nurses Association Gerontological Nurse of the Year, the Pennsylvania Nurses' Association Nursing Education Award, the Distinguished Alumni Award from New York University, and the Doris A. Schwartz Gerontological Nursing Research Award from the Gerontological Society of America.

## Eileen Sullivan-Marx, PhD, CRNP, RN, FAAN



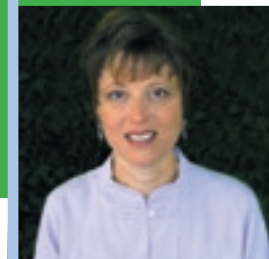
Dr. Sullivan-Marx is an associate professor at the University of Pennsylvania School of Nursing. She received her BSN from the University of Pennsylvania, a master of science degree from the University of Rochester, and holds a doctorate degree from the University of Pennsylvania. With over 20 years experience in the nursing field and as a primary care nurse practitioner with a special interest in geriatrics, Dr. Sullivan-Marx has been on the forefront of new trends in nursing practice since 1980.

Winner of several practice and research awards, Dr. Sullivan-Marx established innovative, model practices for nursing in hospital, outpatient, home care, and nursing home settings, and is a founder, advisor and consultant with the Gerontological Nursing Consultation Service at Penn School of Nursing. Her trend-setting experience has led to numerous appointments on national policy committees.

Dr. Sullivan-Marx's research focuses on outcomes of care for vulnerable older adults and includes demonstration of the effectiveness of nurse-managed programs, restraint reduction in nursing homes, and policy issues on access and payment for health care services. With over 30 publications and numerous national presentations, Dr. Sullivan-Marx has disseminated research findings to improve practice and inform policy that improves care for older adults.

# Speakers

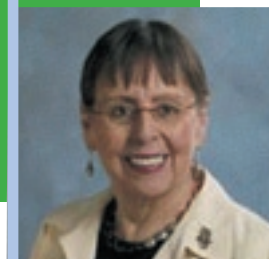
## Karen B. Tetz, PhD, RN



Karen B. Tetz is a professor at the School of Nursing at Walla Walla College, Portland Campus. Her interest in family care stems from many years as a home health nurse and from her research on family caregiving during her doctoral studies at Oregon Health & Science University. Dr. Tetz was a Hartford Predoctoral Scholar from 2001-2003. Her current research projects, in collaboration with Dr. Barbara Stewart and Dr. Patricia Archbold, include exploring longitudinal

change in the quality of caregiver role enactment and using qualitative description to analyze interviews with family caregivers, in order to develop a quantitative measure of quality of caregiver role enactment. Dr. Tetz is committed to increasing geriatric content in nursing education and enjoys creating new ways to help her students learn to provide excellent care for frail elders. Her recent publications include: "How frail elders evaluate their caregiver's role enactment: A scale to measure affection, skill, and attentiveness" in Journal of Family Nursing and "Home Health Care Nursing: A View from the United States" in International Nursing Review: Japanese edition.

## Ana M. Valadez, EdD, RN, FAAN



Dr. Ana M. Valadez joined the TTUHSC, School of Nursing Faculty in 1994. Quality care for elders has remained her passion and to this end she has involved herself in numerous projects that addressed care of elders on the local, state and national level. Since 1994 she has the privilege of sitting in the Roberts Practicship chair, a chair designed to address the teaching needs of the primary nursing home caregiver, the certified nursing assistant.

Dr. Valadez has been a consultant for several Lubbock

nursing homes and most recently (2005) she was a participant in the Teaching Nursing Home project sponsored by the John A. Hartford Foundation and NYU. During her Tenure as Associate Dean for the Undergraduate Program the program (1992) was a first place recipient of the Annual John A. Hartford Foundation Institute for Geriatric Nursing/AACN Award for Exceptional Curriculum in Gerontologic Nursing.

Dr. Valadez continues to contribute to the care of elders through publications, grants and through her involvement with the Nurse Aide Training and Competency Evaluation Program that has been approved for the School of Nursing by the Texas Department of Human Services since 2001. She has been a member of the Academy's Expert Panel on Aging since 1994.

## Rachael Watman, MSW



Rachael Watman is a program officer at the John A. Hartford Foundation, the nation's largest private funder devoted exclusively to aging and health issues. At Hartford, she is responsible for managing a \$65 million portfolio of grants, including five Centers of Geriatric Nursing Excellence and their coordinating center at the American Academy of Nursing. In addition to nursing projects, she manages the Social Work Faculty Scholars Program at the Gerontological Society of America

as well as the two Centers of Excellence in Geriatric Psychiatry at the University of Pittsburgh and California, San Diego.

Prior to working at the Hartford Foundation, she served as director of an adult day program in New York City for older adults with dementia. In addition, Ms. Watman has been a director of a case management program for seniors, worked on the geriatric team of an inpatient psychiatric clinic and in a residential home for adults with autism.

Ms. Watman earned her undergraduate degrees in American Studies and Psychology at Mary Washington College in Virginia and her master's in social work from Columbia University.

# Speakers

# Thank you

## AACN Kathryn Weigel, MS, RN



**K**athryn (Kate) Weigel is a John A. Hartford Foundation scholarship recipient and May 2006 MS graduate of the University of Illinois at Chicago College of Nursing.

She completed the geriatric clinical nurse specialist and advanced practice palliative care nurse programs while working as a research assistant in a longitudinal study of the outcomes of illness and delirium

in hospitalized elderly with principal investigator Marquis Foreman, PhD, RN, FAAN. Kate earned her BSN and a second major in psychology at the University of Minnesota and has 16+ years of geriatric nursing experience. She has worked in public health in WI and long term care in MN and IL, holding staff, management, administrative, and consultative positions. Kate is a member of Sigma Theta Tau and Illinois Nurses Association, a certified dementia unit leader, and an Illinois Department of Health certified rehabilitation nurse.

## May L. Wykle, PhD, RN, FAAN



**M**ay L. Wykle is currently Dean and Florence Cellar Professor of Nursing at the Frances Payne Bolton School of Nursing at Case Western Reserve University where she has been a faculty member since 1969. Since 1988, she has served as Director of the University Center on Aging and Health.

Dean Wykle is recognized nationally as an expert in the field of aging adults. She has completed extensive research projects in areas such as geriatric mental health, family caregiving, minority caregivers, and caring for patients with dementia.

She has initiated educational programs internationally in Europe, Africa and Asia and served as visiting professor at universities in the United States and Zimbabwe. She has been appointed to prestigious positions including as the first "Pope Eminent Scholar" at the Rosalynn Carter Institute for Human Development at Georgia Southwestern State University.

Dean Wykle graduated from the Martins Ferry Hospital School of Nursing in 1956. She earned her BSN in nursing, an MSN in psychiatric nursing, and a PhD in Education at The Frances Payne Bolton School of Nursing, Case Western Reserve University. Dean Wykle is a fellow in the American Academy of Nursing and the Gerontological Society of America. Dean Wykle has received numerous honors and awards.

## Pat Yoder-Wise, EdD, RN, FAAN



**D**r. Pat Yoder-Wise is professor of nursing at Texas Tech University Health Sciences, Lubbock, Texas, where she teaches nursing administration, and at Texas Woman's University (Houston), where she teaches a health policy course. She is the recipient, for the past two years, of the Student

Senate's award for teaching excellence, an award determined by students.

She is the author of the undergraduate text, *Leading and Managing in Nursing*, and coauthor of a graduate text, *Beyond Leading and Managing*. She also is coauthor of a new pocket guide for nurses, *Rapid Reference*. As Editor of *The Journal of Continuing Education in Nursing: Continuing Competence for the Future*, she has created an international perspective and a competency focus.

Currently, she serves as President of the American Nurses Credentialing Center, the home of the Magnet Program.

She is married and has two daughters. She would be the first to tell you that she couldn't do what she does without a really supportive family!

to the 2006  
HGNI Leadership  
Conference  
Speakers who  
make this program  
so exciting!



## Group

Name	Other Role	Title	Institution
------	------------	-------	-------------

### AAN Coordinating Center

Archbold, Pat	■	Program Director	BAGNC/AAN
Burnes Bolton, Linda	■ ■	President	AAN
Dudzik, Pamela		Program Associate	BAGNC/AAN
Franklin, Patty		Program Manager	BAGNC/AAN
McBride, Angela Barron	■	BAGNC Leadership Director	Indiana University
Rushing, Anne		Director of Meetings	AAN
Waples, Natasha		Project Associate	BAGNC/AAN

### Foundation Representatives

Hougham, Gavin		Senior Program Officer	John A Hartford Foundation
Langston, Christopher		Programme Executive	Atlantic Philanthropies
O'Sullivan, James		Senior Program Officer	John A Hartford Foundation
Spellman, Christina	■	Executive Director	The Mayday Fund
Watman, Rachael	■	Program Officer	John A Hartford Foundation

### HCGNEs

Beverly, Claudia	■ ■ ■	Professor/HCGNE Director	University of Arkansas for Medical Sciences
Buckwalter, Kathleen (Kitty)	■ ■	Professor/HCGNE Director	University of Iowa
Kinthead, Bonnie		Program Administrator	University of Iowa
Lubin, Sandie		Program Administrator	University of Arkansas for Medical Sciences
Spool, Monda		Administrator	University of Pennsylvania
Strumpf, Neville	■ ■ ■	Professor/HCGNE Director	University of Pennsylvania
Wallhagen, Meg	■ ■	Professor/HCGNE Director	University of California, San Francisco
Young, Heather	■ ■	Professor/HCGNE Director	Oregon Health & Sciences University

### BAGNC Advisory and Selection Committee Members

Harden, J. Taylor		Assistant to the Director of Special Populations	National Institute on Aging
Bourbonniere, Meg	■ ■	Assistant Professor	Yale University
Hinshaw, Ada Sue		Dean/Professor	University of Michigan
Williams, Carolyn		Professor/Dean Emerita	University of Kentucky
Wyman, Jean		Professor	University of Minnesota

### American Association of Colleges of Nursing Staff

Bednash, Polly	■	Executive Director	American Association of Colleges of Nursing
Dodge, Laurie		Gerontology Program Director	American Association of Colleges of Nursing
Guthrie, Laura		Gerontology Project Assistant	American Association of Colleges of Nursing

OTHER ROLES: ■ Mentor ■ BAGNC Alumni ■ Advisory and Selection Committee Member ■ Speaker ■ AACN

Latimer, Deborah	■ ■	Gerontology Program Manager	American Association of Colleges of Nursing
Stanley, Joan	■	Director of Education Policy	American Association of Colleges of Nursing
Sullivan-Marx, Eileen	■ ■	Creating Careers Director	American Association of Colleges of Nursing

### The Measurement Group

Cooper, Chloe		Research Assistant	The Measurement Group
Huba, George	■	President	The Measurement Group

### Speakers

Bailey, Donald (Chip)	■	Assistant Professor	Duke University
Barba, Beth E.	■ ■	Associate Professor	University of North Carolina at Greensboro
Beck, Cornelia	■ ■	Director/Walker Memory Research Center	University of Arkansas for Medical Science
Beilenson, John		President	Strategic Communications & Planning
Bergstrom, Nancy		Professor	University of Texas-Houston
Brown, Billye		Dean/Professor Emerita	University of Texas-Austin
Davis, Cecile	■	Heart Failure Case Manager	Virginia Hospital Center in Arlington
Dellefield, Mary Ellen	■	Assistant Professor	San Diego State University
Dumas, Rhetaugh		Professor/Dean Emerita	University of Michigan
Efeovbokhan, Ughanmwan (TK)	■	Geriatric Nurse Practitioner	University of Texas Health Science Center
Ford, Loretta		Dean & Professor Emerita; 2006 MSH Recipient	University of Rochester, NY
Gordon, Suzanne		Journalist and author	Self Employed
Hansen, Lissi	■	Assistant Professor	Oregon Health & Science University
Kelley, Lisa	■	Assistant Professor	University of Iowa
Maddox, Jessica	■	Nurse Practitioner	Evercare
Mason, Diana		Editor-in-Chief	American Journal of Nursing
McDougall, Jr, Graham		Professor	University of Texas-Austin
Miller, Elizabeth M.	■ ■	Director of Health Services	Evercare
Pesut, Daniel	■	Professor/Assoc. Dean	Indiana University-Indianapolis
Rakel, Barbara		Assistant Professor	University of Iowa
Reinhard, Susan		Co-Director/Research Professor	Center for State Health Policy
Tetz, Karen	■	Professor	Walla Walla College, Portland
Valadez, Ana		Associate Dean	Texas Tech University Health Science Center
Weigel, Kathryn	■	JAHF Scholar Recipient	University of Illinois at Chicago
Wykle, May	■	Dean/Florence Cellar Professor	Case Western Reserve University
Yoder-Wise, Pat		President/Professor	Texas Tech University Health Science Center

### 2006 BAGNC Scholars and Fellows

Arevalo, Lyda		BAGNC Scholar	University of Texas at San Antonio Health Science Center
Black, Mary		BAGNC Scholar	University of Minnesota
Blodgett, Tom		BAGNC Scholar	University of Iowa
Brody, Abraham		BAGNC Scholar	University of California, San Francisco
Bunting-Perry, Lisette		BAGNC Scholar	University of Pennsylvania
Buron, Bill		BAGNC Scholar	University of Arkansas for Medical Sciences
Caley, Elizabeth		BAGNC Scholar	Oregon Health & Science University

OTHER ROLES: ■ Mentor ■ BAGNC Alumni ■ Advisory and Selection Committee Member ■ Speaker ■ AACN

Campbell, Judy	BAGNC Scholar	University of Florida
Chen, Wan	Claire M. Fagin Fellow	University of California, San Francisco
Chu, Nancy	Claire M. Fagin Fellow	University of Oklahoma
D'Avolio, Deborah	Claire M. Fagin Fellow	University of Pennsylvania
Delville, Carol	BAGNC Scholar	University of Texas at Austin
Enderlin, Carol	BAGNC Scholar	University of Arkansas for Medical Sciences
Gabrielson, Marcena	BAGNC Scholar	University of Iowa
Hostvedt, Katherine	BAGNC Scholar	University of Pennsylvania
Kemp, Carol	BAGNC Scholar	Oregon Health & Science University
Mayo, Ann	Claire M. Fagin Fellow	University of California, San Francisco
McKown, Mary Kay	BAGNC Scholar	University of California, San Francisco
Ono, Charlene	BAGNC Scholar	University of Hawaii, Kauai Community College
Prevost, Suzanne	Claire M. Fagin Fellow	Middle Tennessee State & UAMS
Sexson, Kathryn	BAGNC Scholar	Oregon Health & Science University
Thompson, Hilaire	Claire M. Fagin Fellow	University of Washington
Trotta, Rebecca	BAGNC Scholar	University of Pennsylvania
Van Cleave, Janet	BAGNC Scholar	Yale University
Yao, Lan	Claire M. Fagin Fellow	University of Michigan, Ann Arbor

## 2005 BAGNC Scholars and Fellows

Balas, Michelle	BAGNC Fellow	University of Pennsylvania School of Nursing
Beeber, Anna	BAGNC Fellow	University of North Carolina At Chapel Hill
Bellot, Jennifer	BAGNC Scholar	University of Pennsylvania
Benton, Nancy	BAGNC Scholar	Oregon Health & Science University
Beuscher, Linda	BAGNC Scholar	University of Arkansas for Medical Sciences
Bradway, Christine	BAGNC Fellow	University of Pennsylvania
Casey, Colleen	BAGNC Fellow	Oregon Health & Science University
Crighton, Margaret	BAGNC Fellow	University of Pittsburgh, School of Nursing
Dyck, Mary	BAGNC Scholar	Illinois State University
Fleming, Mary Louise	BAGNC Fellow	University of California, San Francisco
Harrison-Culp, Tracie	BAGNC Fellow	The University of Texas at Austin
Holkup, Patricia	BAGNC Fellow	Montana State University, Missoula Campus
Li, Wen-Wen	BAGNC Fellow	University of California, San Francisco
Merrilees, Jennifer	BAGNC Scholar	University of California, San Francisco
Mitchell, Sadie	BAGNC Scholar	University of Pennsylvania
Pomeroy, Sherry	BAGNC Fellow	University of Maryland, University of Buffalo
Pretzer-Aboff, Ingrid	BAGNC Scholar	University of Maryland
Russell, Cynthia	BAGNC Fellow	University of Missouri-Columbia
Swafford, Kristen	BAGNC Scholar	Oregon Health & Science University
Szanton, Sarah	BAGNC Scholar	Johns Hopkins University
Tak, Sunghee	BAGNC Fellow	University of Arkansas for Medical Sciences
Umbarger-Mackey, Michelle	BAGNC Scholar	University of Iowa College of Nursing
Vogelsmeier, Amy	BAGNC Scholar	University of Missouri-Columbia
Walent, Ronald	BAGNC Scholar	University of California, San Francisco

## BAGNC Mentors

Algase, Donna L.	2006 Mentor	University of Michigan
Clipp, Elizabeth	2005 Mentor	Duke University
Conn, Vicki	2005 Mentor	University of Missouri-Columbia
Culp, Kenneth	2005 Mentor	University of Iowa
Dowling, Glenna	2005 Mentor	University of California, San Francisco
Evans, Lois K.	2006 Mentor	University of Pennsylvania
Froelicher, Erika S.	2006 Mentor	University of California, San Francisco
Harvath, Therese	2006 Mentor	Oregon Health & Science University
Hepburn, Kenneth	2004 Mentor	University of Minnesota
Ishida, Dianne	2006 Mentor	University of Hawaii, Kauai Community College
Kagan, Sarah H.	2006 Mentor	University of Pennsylvania
Lewis, Sharon	2006 Mentor	University of Texas Health Science Center
Maas, Meridean	2006 Mentor	University of Iowa
McCorkle, Ruth	2006 Mentor	Yale University
Miller, Lois	2006 Mentor	Oregon Health & Science University
Moss, Margaret	2006 Mentor	University of Minnesota
Richards, Kathy	2006 Mentor	University of Arkansas for Medical Science College of Nursing
Richmond, Therese	2005 Mentor	University of Pennsylvania
Rowe, Meredith	2006 Mentor	University of Florida
Scott-Cawiezell, Jill	2005 Mentor	University of Missouri-Columbia
Souder, Elaine	2006 Mentor	University of Arkansas for Medical Sciences
Specht, Janet	2006 Mentor	University of Iowa College of Nursing
Stuifbergen, Alexa K.	2005 Mentor	University of Texas at Austin
Tripp-Reimer, Toni	2006 Mentor	The University of Iowa

## BAGNC Alumni

Bond, Stewart	2001 Alumni	University of North Carolina, Chapel Hill
Inguito, Tinagene Pia L.	2004 Alumni	University of Maryland, Baltimore
Petross-Echfield, Monika	2004 Alumni	University of California, San Francisco
Sanchez, Tamika	2001 Alumni	Kennesaw State University
Siegel, Elena	2004 Alumni	University of Washington

## Evercare Scholars

Cook, Elaine	Scholar	University of Iowa
Fisher, Lucy	Scholar	University of California, San Francisco
Karlman, Susan	Scholar	University of Iowa
Lacey, Erin	Scholar	University of Pennsylvania
Volpin, Miriam	Scholar	Oregon Health & Science University

OTHER ROLES: ■ Mentor ■ BAGNC Alumni ■ Advisory and Selection Committee Member ■ Speaker ■ AACN

OTHER ROLES: ■ Mentor ■ BAGNC Alumni ■ Advisory and Selection Committee Member ■ Speaker ■ AACN

## Hartford Institute for Geriatric Nursing

Capezuti, Elizabeth	■ ■ ■ Co-Director	Hartford Institute for Geriatric Nursing
Gretebeck, Kimberlee	Hartford Institute Scholar	Hartford Institute for Geriatric Nursing
Kim, Hongsoo	Assistant Professor	New York University
Ott, Carol	Hartford Institute Scholar	Hartford Institute for Geriatric Nursing
Mathews, Judith	Hartford Institute Scholar	Hartford Institute for Geriatric Nursing

## AACN / Hartford Creating Careers Scholars

Benoit, Kathleen	Scholar	University of Rhode Island
Bland, Tina	Scholar	Radford University
Burke, Sarah	Scholar	Pennsylvania State University
Ceesay, Momodou	Scholar	University of Minnesota
Christie, Sharon	Scholar	Case Western Reserve University
Cole Daly, Carey	Scholar	Radford University
DeBerry, Dawn	Scholar	University of California Los Angeles
Fey, Tammy L.	Scholar	University of Texas Health Science Center, San Antonio
Findlay, Meghan	Scholar	Case Western Reserve University
Flanagan, Abigail	Scholar	Hunter College
Forloney, Barbara	Scholar	University of Rhode Island
Glynn, Tammy L.	Scholar	University of Massachusetts, Worcester
Grove, Lori J.	Scholar	Pennsylvania State University
Gutierrez, Monique Marie	Scholar	University of California Los Angeles
Harless, Gregory L.	Scholar	St. Louis University
Harmon, Ashley	Scholar	Yale University
Harrelson, Andrea	Scholar	Radford University
Khadar, Fatima	Scholar	University of Rhode Island
Kish, Jennifer	Scholar	University of Minnesota
Krause, Kelly	Scholar	New York University
Meek, Tiffany	Scholar	Case Western Reserve University
Mowassee, Maria	Scholar	New York University
Obonaga, Shelia M.	Scholar	Hunter College
Perez, Teresa	Scholar	University of Texas Health Science Center, San Antonio
Perotta, Christina	Scholar	St. Louis University
Peterson, Nicole	Scholar	University of Iowa
Quintero, Amy	Scholar	University of Texas Health Science Center, San Antonio
Ramsey, Melanie	Scholar	Case Western Reserve University
Richardson, Vicki T.	Scholar	Duke University
Rondeau-Marzullo, Donna M.	Scholar	University of Rhode Island
Sabatino, Christine	Scholar	University of Pennsylvania
Salazar, Romelia	Scholar	University of Massachusetts, Worcester
Sartin, Taylor	Scholar	University of Oklahoma
Tran, Gigi	Scholar	University of Iowa
Vega, Denise	Scholar	University of Texas Health Science Center, San Antonio
Walton, Joan T.	Scholar	University of Rhode Island
Wolfe Blake, Rosslyn	Scholar	University of Texas Health Science Center, San Antonio
Wright, Robin	Scholar	Radford University
Yopp, Amanda W.	Scholar	Duke University

OTHER ROLES: ■ Mentor ■ BAGNC Alumni ■ Advisory and Selection Committee Member ■ Speaker ■ AACN

## The American Academy of Nursing (AAN)

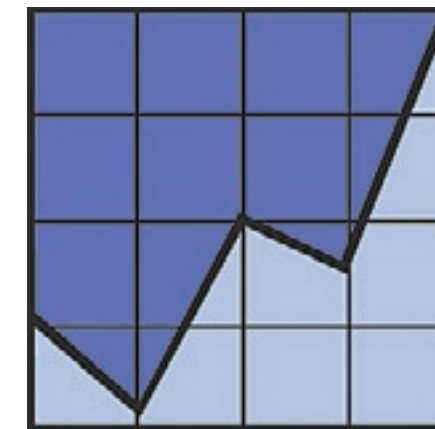


The American Academy of Nursing is comprised of approximately 1500 nursing leaders in education, management, practice and research.

The American Academy of Nursing (AAN) is constituted to anticipate national and international trends in health care, and address resulting issues of health care knowledge and policy. Not only is the invitation to Fellowship recognition of one's accomplishments within the nursing profession, but also affords an opportunity to work with other leaders in health care in addressing the issues of the day.

Resources and mechanisms available for purposeful networking include Nursing Outlook magazine, Expert Panels, the Institute of Medicine/ANF/AAN Scholar in Residence Program, and the facilitation of appointments to policy positions. For more information, please visit the website [www.aannet.org](http://www.aannet.org)

## The Measurement Group, LLC (TMG)



The Measurement Group, LLC (TMG) is a firm that specializes in the application of scientific methods of program evaluation to help health and social services programs document their activities and programs, record outcomes, assure the quality of their services, and improve quality. TMG's work covers the areas of healthcare, mental health treatment, substance abuse services, HIV/AIDS, social services, psychological testing and assessment, data systems data analysis, and statistical modeling. TMG works with clients to develop methods to measure program success and to mine existing data for the purposes of

evaluation, quality assurance, management information, and marketing. As the independent external evaluator for the overall Hartford Geriatric Nursing Initiative, TMG works with the John A. Hartford Foundation and the institutions that comprise HGNI to provide meaningful information to further enhance the overall Initiative.

For more information about TMG, please visit [www.TheMeasurementGroup.com](http://www.TheMeasurementGroup.com). For more information on the evaluation of the HGNI, please visit [www.GeriatricNursing.info](http://www.GeriatricNursing.info).

## Hartford Geriatric Nursing Initiative (HGNI)



### Hartford Geriatric Nursing Initiative

Launched in 1995, the Hartford Geriatric Nursing Initiative (HGNI) is confronting the challenges associated with an aging population through an array of programs. In partnership with the nation's nursing schools and a variety of health care organizations and systems, this dynamic, national initiative works in five areas:

- Shaping nursing **practice** to best meet the health care needs of older adults
- Enhancing professional **education** to ensure all nurses are prepared to treat older adults
- Promoting **research** needed to guide the care and promote the health of older adults
- Developing **leadership** in academic and professional settings
- Demonstrating nursing's commitment to enacting public **policy** that improves older Americans' health care

The chart below provides a snapshot of the institutions involved and efforts underway in the HGNI.

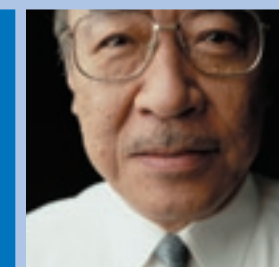
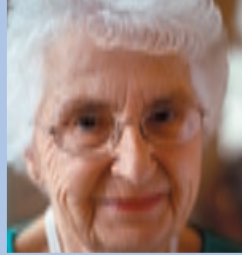
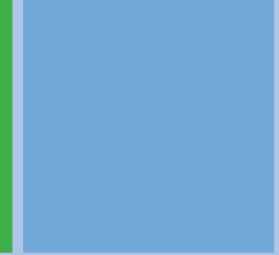
### The John A. Hartford Foundation \$60 Million Investment in Geriatric Nursing\* 1996 – 2005

#### Hartford Geriatric Nursing Initiative (HGNI)

<p>Hartford Institute for Geriatric Nursing 1996/2001</p> <ul style="list-style-type: none"> <li>■ Practice</li> <li>■ Education</li> <li>■ Research</li> <li>■ Policy</li> </ul> <p>www.hartfordign.org</p>	<p>**American Academy of Nursing 2000/2003/2004/2005</p> <ul style="list-style-type: none"> <li>■ BAGNC Awards Program                     <ul style="list-style-type: none"> <li>■ Predoctoral Scholarships</li> <li>■ MBA Scholarships</li> <li>■ Postdoctoral Fellowships</li> </ul> </li> <li>■ Coordinating Center</li> <li>■ Nursing School</li> <li>■ Geriatric Investment Program</li> </ul> <p>www.geriatricnursing.org</p>	<p>**Centers of Geriatric Nursing Excellence 2000/2005</p> <ul style="list-style-type: none"> <li>■ Oregon Health &amp; Science University</li> <li>■ University of Arkansas for Medical Sciences</li> <li>■ University of California, San Francisco</li> <li>■ University of Iowa</li> <li>■ University of Pennsylvania</li> </ul> <p>www.geriatricnursing.org/centers/</p>	<p>American Association of Colleges of Nursing 2001/2004/2005</p> <ul style="list-style-type: none"> <li>■ Enhancing Geriatric Nursing Education at Baccalaureate and Advanced Practice Levels</li> <li>■ Creating Careers in Geriatric Advance Practice Nursing</li> <li>■ Enhancing Gerontology Content in Baccalaureate Nursing Education Programs</li> </ul> <p>www.aacn.nche.edu/Education/Hartford</p>
--	--	--	--

\*\*Building Academic Geriatric Nursing Capacity Program

\*The Measurement Group (www.TheMeasurementGroup.com) conducts an overall independent evaluation of the Hartford Geriatric Nursing Initiative.



## In Appreciation

The American Academy of Nursing and the Coordinating Center recognize the important contributions their partners make to the Scholar and Fellow Award Program through financial support and collaborative initiatives.

THE  
MAYDAY  
FUND

The  
ATLANTIC  
Philanthropies



NATIONAL INSTITUTE ON AGING

