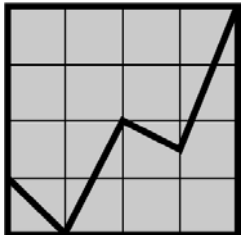


# The Measurement Group



The Measurement Group LLC. (TMG) has evaluated programs funded by the Health Resources and Services Administration; the Center for Substance Abuse Treatment; the Center for Substance Abuse Prevention; the Center for Mental Health Services; the Centers for Disease Control and Prevention ; The National Institute on Drug Abuse ; the office of Treatment Improvement; the State of California, the Counties of Los Angeles, San Diego, Ventura, Lassen, and Plumas (California).

TMG has done work throughout the United States and in Canada, working with clients to develop methods to measure program success and to mine existing data for the purposes of evaluation, quality assurance, management information, and marketing. TMG's work covers the areas of healthcare, mental health treatment, substance abuse services, HIV/AIDS, social services, psychological testing and assessment, data systems, data analysis, and statistical modeling.

As the independent external evaluator for the overall Hartford Geriatric Nursing Initiative, TMG works with the John A. Hartford Foundation, the Coordinating Center housed at the American Academy of Nursing (AAN), the Coordinating Center housed at the American Association of Colleges of Nursing (AACN), and the John A. Hartford Institute for Geriatric Nursing at New York University to provide meaningful information to further enhance the overall Initiative. Through a consensus process, TMG has developed and implemented evaluation methodologies to collect and analyze a wealth of quantitative and qualitative data.



## *George J. Huba, Ph.D.,*

President of The Measurement Group LLC, George J. Huba, Ph.D., is a California-licensed psychologist specializing in program evaluation, psychological measurement and testing, health services strategic planning, and management consulting. Dr. Huba received his Ph.D. Program in Psychology at Yale University and is a Fellow of Divisions 5 and 50 of the American Psychological Association as well as the American Psychological Society.

Dr. Huba formerly served as the Associate Director of the UCLA Center for the Study of Adolescent Drug Abuse Etiologies and held faculty appointments the University of Minnesota, and UCLA. Prior to founding The Measurement Group, Dr. Huba was Vice President of Research and Development for Western Psychological Services, where he was one of the pioneers in online test administration, scoring, and interpretation. Dr. Huba has nearly 200 publications and has been on the editorial boards of more than a dozen journals including the *Journal of Gerontology* and *Educational and Psychological Measurement*.

*For more information about The Measurement Group, please visit  
[www.TheMeasurementGroup.com](http://www.TheMeasurementGroup.com)*

# Agenda



**Wednesday, November 19, 2003**

---

- 9:00 AM - Noon** CGNE Directors Meeting **Columbia 1**
- 10:00 AM - Noon** CGNE Administrators Meeting **Columbia 3**
- 11:00 AM** Registration Opens **Marriott Hall Registration Desk**
- 12:00 - 1:30 PM** Welcome Luncheon **San Diego Ballroom A**  
Introductions and Charge to Scholars  
Program Director: Claire M. Fagin, PhD, RN, FAAN  
Greetings from the John A. Hartford Foundation  
Executive Director: Corinne Rieder, EdD  
Greetings from the American Academy of Nursing &  
Introduction of BAGNC Scholars and Mentors  
President: Joan Shaver, PhD, RN, FAAN  
Greetings from the American Association of Colleges  
of Nursing & Introduction of Scholars and Faculty  
Executive Director: Polly Bednash, PhD, RN, FAAN  
Greetings from the John A. Hartford Foundation Institute  
for Geriatric Nursing & Introduction of Institute Scholars  
Director: Mathy Mezey, EdD, RN, FAAN
- 1:30 - 3:00 PM** **“Orchestrating a Research Career”** **Marriott Hall 1**  
2003 Scholars and Mentors  
Leadership Conference Director:  
Angela Barron McBride, PhD, RN, FAAN  
Followed by “An Introduction to the Evaluation of the  
John A. Hartford Foundation’s BAGNC Scholars Program”  
2003 Scholars and Mentors  
The Measurement Group: Le Quach, MPH
- 1:30 - 3:00 PM** Poster Set Up and Communication Consultation **San Diego Ballroom B**  
2002 Scholars and Mentors  
Strategic Communications & Planning: John Beilenson, President

**1:30 - 3:00 PM** CGNE and NSGIP Joint Session **Marriott Hall 2**

**3:00 - 3:30 PM** Break **Marriott Hall 1 & 2 Foyer**

**3:30 - 5:00 PM** ***Panel I. Interdisciplinary Collaboration*** **Marriott Hall 5 & 6**

This panel features nurses who held leadership roles in an interdisciplinary professional group. Panelists will answer questions including:

- How did your nursing background help/hinder your leadership role in an interdisciplinary organization?
- Partnership synergy is important for comprehensive action to occur, how has this played out in interdisciplinary collaboration within both your own research and your association work?
- How did your experiences change you as a leader? What advice do you have to offer fledgling leaders?

Moderator: Claire Fagin, PhD, RN, FAAN

Panel Members: Jacqueline Dunbar-Jacob, PhD, RN, FAAN  
Terry Fulmer, PhD, RN, FAAN  
Margaret Grey, DrPH, RN, FAAN  
Martha Hill, PhD, RN, FAAN

**5:00 - 7:00 PM** Poster Presentations and Reception **San Diego Ballroom B**

## ***Thursday, November 20, 2003***

---

**7:30 - 8:30 AM** Breakfast **Marriott Hall 5 & 6 Foyer**

**8:30 - 10:30 AM** ***Panel II. The Shaping of Policy*** **Marriott Hall 5 & 6**

This panel considers how the tripartite mission of the university (teaching, research, service) is shaped by policy and must, in turn, play a role in shaping policies/regulations. Panelists will discuss:

- In what ways are academic health professionals' naïve about how policy affects both their work and the health care available to the public?
- How can nurses shape health policy?
- Why is it that some federal programs of concern to nursing are regularly "zeroed out" in budget preparation, and can we do anything about that?
- How do you move from data to actionable information to changes in practice?

Moderator: Deanna Gray-Miceli, DNSc, RN, CS, CRNP,

Panel Members: Jessie Gruman, PhD  
David J. Morse, MA  
William J. Scanlon, PhD  
Mary Wakefield, PhD, RN, FAAN

# Nursing School Geriatric Investment Program

---



The Nursing School Geriatric Investment Program, formally established in October 2001 through the generous support of the John A. Hartford Foundation (JAHF), joins a complement of JAHF geriatric nursing programs. Within the past 7 years, the JAHF invested over \$39,000,000 in building the capacity of expert geriatric nurses, nurse faculty and researchers who will provide the education, leadership and scholarships required to advance the care of older adults.

This particular national endeavor focuses on a variety of approaches to advance the quality of health care to older adults. The first phase of the program involved identifying a group of academic nursing programs poised for further, rapid geriatric advances. Dr. Claire Fagin, program director, sent out a call for proposal to Schools of Nursing who met these criteria and were asked to demonstrate how such a grant would:

- Enhance their offerings;
- Step up their plans in geriatrics;
- Make observable improvement in geriatric education and training.

Seven schools were selected through a review process conducted by senior John A. Hartford Foundation staff and American Academy of Nursing project leaders.

- Case Western Reserve University; Beverly Roberts, PhD, RN, FAAN
- University of Michigan; Donna Algase, PhD, RN, FAAN
- University of Minnesota; Jean Wyman, PhD, RN, FAAN
- University of North Carolina Chapel Hill; Joyce Rasin, PhD, RN
- University of Rochester; Nancy Watson, PhD, RN & Bethel Powers, PhD, RN
- University of Washington; Ruth Craven, PhD, RNC, FAAN

Each school of nursing selected receives a grant of \$75,000 per year for three years - matched by their university with \$25,000 per year - totaling \$300,000 of support over the life of the grant.

The funding for the seven schools is provided, via subcontract with the American Academy of Nursing, which serves as the coordinating center for the Foundation's Building Academic Geriatric Nursing Capacity Program. Identical leadership for both projects will reinforce the synergy between these two projects.

*Visit the NSGIP Website at [www.geriatricnursing.org/nsgip](http://www.geriatricnursing.org/nsgip)*

# Mary Starke Harper

## Distinguished Lectureship

---



On November 20, 2002 Mary Starke Harper addressed over 130 scholars and invited guests at the Second Annual Building Academic Geriatric Nursing Capacity Leadership Conference in Boston. Dr. Harper, a living legend, is now 83 years old. Her life and her career trajectory – still going strong - held the audience spellbound as she spoke of her commitment to geriatric and psychiatric health care, her professional and personal accomplishments within a social fabric fret with bias and bigotry and her work yet to be completed.

The reception that followed, to honor this distinguished guest, gave the audience individual access to this gracious and commanding nurse leader. Not surprisingly, the evaluation of this program received the highest marks possible by every attendee. As a result of the overwhelming response to this event, the Building Academic Geriatric Nursing Capacity Program proposed the idea of the Mary Starke Harper Distinguished Lectureship for future Leadership Conferences.

This John A. Hartford Foundation supported program has grown and gained nation – wide recognition in the short three years since it began. This year, over 125 gerontology nurses will attend. Developing unique and meaningful opportunities for leaders to foster and inspire future leaders is core to the mission of this program. Providing a forum which allows nurses to listen and learn from such leaders is not only educational but inspirational.

This lectureship highlights the career of a nurse leader who has made significant contributions to the field of gerontology. The indelible wisdom and grace of these proven legends is an invaluable gift to our future leaders. Building on the strength of past leaders supports the promise within the next generation of nurses.

*T*hrough the generous support of the  
Johnson & Johnson Family of Companies,  
the first Mary Starke Harper Distinguished Lectureship  
will be awarded to  
**Florence S. Wald, RN, MN, MA, FAAN**  
on Thursday November 20, 2003.

**10:30 - 11:00 AM** Break **Marriott Hall 5 & 6 Foyer**

**11:00 - 12:30 PM** ***Panel III. Hope, Optimism and Resilience: The Move to Positive Organizing Frameworks*** **Marriott Hall 5 & 6**

This panel will focus on how the organizing framework for aging/gerontology is beginning to move away from a deficit or disease model toward an incorporation of positive concepts:

- There is a national movement toward positive psychology, so is there something comparable going on in nursing?
- Is research emphasizing hope, optimism and resilience of particular importance to aging and nursing science?
- What policy changes will have to be implemented in order to support research/practice with this emphasis?

Moderator: Beth Barba, PhD, RN

Panel Members: Karin Dufault, S.P., RN, PhD  
Becca Levy, PhD  
Thomas Perls, MD  
Irene B. Seeland, MD

**12:30 - 2:00 PM** Networking Luncheon **San Diego Ballroom B**

**Effective Public Speaking**

Karen Greco, RN, MN, ANP

**HGNI Development**

John Beilenson

**2:00 - 4:00 PM** ***Concurrent Sessions:***

**Maximizing Hartford Opportunities** **San Diego Ballroom B**

A discussion designed for 2003 Scholars

Facilitators: Sarajane Brittis, PhD  
Claire Fagin, PhD, RN, FAAN,  
Patricia D. Franklin, RN, MSN,  
Rita Jablonski, PhD, RN, ANP-BC,

**Getting the Most Out of Your Master's Program** **San Diego Ballroom C**

A session designed for AACN program participants

Speakers: Marquis Foreman, PhD, RN, FAAN  
Eileen Sullivan-Marx, PhD, RN, FAAN

**What Do We Know That Is Ready for Practice?** **Marriott Hall 1**

A discussion focused on geriatric research ready to become "best practices" and what is needed to make that happen.

Facilitators: Claudia Beverly, PhD, RN, FAAN  
Neville Strumpf, PhD, RN, FAAN

- 2:00 - 4:30 PM**      **Building Hope: A Workshop**      **Marriott Hall 2**  
 Leader: Lamar Carter, The Center for a Science of Hope
- 4:30 - 6:00 PM**      **The Mary Starke Harper Distinguished Lectureship**      **San Diego Ballroom A**  
 ~ Florence Wald, RN, MN, MA, FAAN ~  
 Angela Barron McBride will lead Ms. Wald in reminiscing about her career, particularly the leadership she exerted in the Hospice Movement.
- 6:00 - 7:30 PM**      Reception honoring Florence Wald      **San Diego Ballroom B**

## *Friday, November 21, 2003*

---

- 7:30 - 8:30 AM**      Breakfast      **Marriott Hall 1 & 2 Foyer**
- 8:30 - 10:30 AM**      **Panel IV. The Economics of Care Giving**      **Marriott Hall 1 & 2**  
 This panel focuses on nursing's responsibility to shape the economics of care giving:
- How do you go about incorporating economic indicators into research?
  - What do nurses need to know to be informed about economic matters?
  - In ensuring that others concerned about aging/gerontology are aware of the economic importance of nurses, what would you stress?
  - How do you go from research to product?
  - How is the move to "mass customization" through use of interactive technology likely to affect the move from research to product in geriatric nursing?
- Moderator:            Elizabeth Miller, CRNP, RN
- Panel Members:      Pat Archbold, PhD, RN, FAAN  
                                  Lynette Jones-Baucke, PhD, RN, MBA  
                                  Jeanie Kayser-Jones, PhD, RN, FAAN  
                                  Meridean Maas, PhD, RN, FAAN
- 10:30 - 11:00 AM**      **Endnotes: Reflections on Leadership**      **Marriott Hall 1 & 2**  
 By Linda Burnes Bolton, DrPH, RN, FAAN

# John A. Hartford Foundation Institute for Geriatric Nursing



Division of Nursing, The Steinhardt School of Education, New York University  
246 Greene Street, New York, NY 10003-6677 • Tel: 212-998-9018 • Fax: 212-995-4561  
E-mail: hartford.ign@nyu.edu • Website: www.hartfordign.org

## *The Missions*

The John A. Hartford Foundation Institute for Geriatric Nursing is the only nurse-led organization in the country seeking to shape the quality of the nation's health care for older Americans by promoting geriatric nursing excellence to the nursing profession and to the larger health care community. The Hartford Institute seeks to positively influence both the skills of individual nurses and the quality of the systems in which they learn and work.

## *Improving Care for Older Adults Through Nursing*

The Hartford Institute accomplishes its mission through work in four areas: *Nursing Education*, *Nursing Practice*, *Nursing Research*, and *Nursing Policy*. Within these areas, partnerships and individual leaders are nurtured to augment, enrich, and disseminate the work of the Hartford Institute.

The Institute's work comprises a wide network of projects and products that help nurses and other professionals increase their knowledge and skills, integrate evidence-based care models, and understand the benefits of strong geriatric nursing practice.

The projects consist of resources in multiple formats including the nationally acclaimed curriculum guide *Best Nursing Practice in Care for Older Adults: Incorporating Essential Gerontologic Content into Baccalaureate Nursing and Staff Development* available on CD-ROM.

## *Enhancing Geriatrics in Nursing Education:*

- Nationally acclaimed curriculum resources
- Curricular guidelines and core competencies
- National education awards
- Models for dissemination
- Faculty development

## *Making Geriatric Best Practice Common Practice:*

- Care models for hospital-wide system change
- Staff development and training resources
- Assessment instrument and tools
- Gerontological certification free online review course
- Specialty nursing geriatric resources
- Geriatric competencies for hospital nurses

## *Fostering Geriatric Nursing Research:*

- Geriatric Nursing Research Scholars Program
- National and regional research awards

## *Addressing Geriatrics in the National Agenda:*

- Newsletter on policy
- Expert panels formulating policy recommendations
- Consumer education on geriatric nursing care
- Coalition building

# Geriatric Nursing Education Project

Enhancing Gerontological/Geriatric Nursing Education for Undergraduate Baccalaureate and Advanced Practice Nursing Programs



One Dupont Circle, NW • Suite 530 • Washington, DC 20036-1120  
Phone: 202.463.6930 • Fax: 202.785.8320  
[www.aacn.nche.edu](http://www.aacn.nche.edu)

*Advancing Higher  
Education In  
Nursing*

In June 2001, the American Association of Colleges of Nursing (AACN) received a \$3.99 million grant from The John A. Hartford Foundation of New York that champions innovation in geriatric nursing education programs. Grant monies were awarded to support gerontology curriculum development and new clinical experiences in 20 baccalaureate and 10 graduate schools of nursing. Funds were disseminated to institutions that provided an innovative plan of action that reflects incorporation of nationally recognized benchmarks.

Award recipients will generate a broad array of products and models that will be disseminated to the full body of baccalaureate and graduate nursing. The expectation is that the work of the awardees will be replicated and improved upon many times over to create a continuously evolving education model to promote quality care for older Americans. All awardees will communicate their innovations to the nursing community by monographs, curricular models, program contacts, presentations at future AACN conferences, and posting of innovations on AACN's Web site.

## *Creating Careers in Geriatric Advanced Practice Nursing*

In September 2001, the AACN received a \$2 million grant from The John A. Hartford Foundation of New York to promote career opportunities in geriatric advanced practice nursing and improve the quality of care for older adults. Through this initiative, AACN has provided scholarship monies to schools of nursing with geriatric advanced practice nursing programs to expand their student base. Competitive scholarship funds were awarded to schools with geriatric advanced practice nursing programs. The annual number of scholarship students varies in each school. Schools must demonstrate that funds would be used to increase enrollment in geriatric nursing programs, rather than provide support for students already in the pipeline. Schools must provide matching funds for all awarded monies over the 3-year period. Awards were granted to schools meeting criteria that addressed their ability to recruit nationally with geographic, cultural, and ethnic diversity, and prepare graduates with skills to sustain careers in geriatric nursing.

Along with increasing the supply of geriatric nurses, this initiative will also help to define the leadership role of the geriatric APN and spark the development of a broader range of career opportunities in geriatric nursing. This step is necessary to improving the field's appeal as an attractive and dynamic career option.

In an effort to reach the larger nursing community, AACN has created a list serve and a Web site to facilitate online communication, disseminate information, and foster networking among clinical leaders, scholarship recipients, and noted experts in geriatrics. AACN will also work to ensure national visibility for this project while boosting awareness of its goals and outcomes.

**For more information contact Deirdre Thornlow, Director of Gerontology Projects:**

**Email: [dthornlo@aacn.nche.edu](mailto:dthornlo@aacn.nche.edu) • Ph: (202) 463-6930, ext. 259**

**Or visit AACN's Web site at <http://www.aacn.nche.edu>**

# Speakers



## Patricia Archbold, RN, DNSc, FAAN

Pat Archbold is the Elnora E. Thomson Distinguished Professor at the Oregon Health & Science University and an Adjunct Investigator at the Kaiser Permanente Northwest Region Center for Health Research. Her research focuses on family care for frail elders. She is PI for “PREP: Family-based care for frail older persons” (R01 AG17909), a study funded by the National Institute on Aging, the Agency for Health Care Research and Quality, and the National Institute of Nursing Research. She has directed the Institutional National Research Service Award (T32 NR 07048) training program for predoctoral and postdoctoral fellows in gerontological nursing for 12 years. Dr. Archbold is also the Director of the John A. Hartford Center of Geriatric Nursing Excellence. An emphasis of the center is a summer intensive postdoctoral program focused on preparing regional faculty to conduct gerontological nursing research.



## Beth E. Barba, PhD, RN

Dr. Beth Barba graduated from St. Francis School of Nursing in Jersey City, and has a Master in Arts in Nursing Science and PhD in Nursing Research and Theory Development from New York University. Dr. Barba is an Associate Professor in the School of Nursing at the University of North Carolina at Greensboro. She is a 2002 Building Academic Geriatric Nursing Capacity Post Doctoral Fellow, working with her mentor, Dr. Eleanor McConnell at Duke University School of Nursing. Her research area is the effect of companion animals on behaviors of older adults with dementia. Dr. Barba was a 2001 Hartford Institute Geriatric Nursing Research Scholar. Dr. Barba has been teaching gerontological nursing for more than 20 years. She received the AACN/JAHF Runner up Award for Excellence in Baccalaureate Geriatric Curriculum (1999) for the School of Nursing, and is Project Director for the AACN/JAHF Enhancing Geriatric Nursing in the Baccalaureate Program Award for Baccalaureate programs (2002-2005).



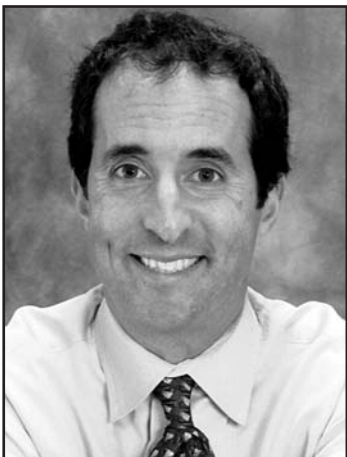
## Denise Lynette Jones-Baucke, PhD, RN

Dr. Lynette Jones is currently, a John A. Hartford Foundation Geriatric Administrative MBA Scholar. She is also the founder of Point of CareWare, a company that makes point of care software for long term care caregivers. She is also a clinical assistant professor in the school of nursing at University of Washington School of Nursing. Dr. Jones is a frequent speaker at long term care conferences and an informatics consultant to many long term care organizations.



## Geraldine Bednash, PhD, RN, FAAN

Geraldine Bednash was appointed executive director of the American Association of Colleges of Nursing (AACN) in December 1989. In her role, Dr. Bednash oversees the educational, research, governmental affairs, publications, and other programs of the organization that is the national voice for baccalaureate and graduate-degree education programs in nursing – *the nation's largest health care profession*. Dr. Bednash currently serves as vice president for nursing of the Health Professions Education Council of the Association of Academic Health Centers and is a member of the editorial board of several leading nursing publications, including *Nursing Spectrum*. Her publications and research presentations cover a range of critical issues in nursing education, research, clinical practice, and legislative policy. Dr. Bednash is a fellow of the American Academy of Nursing and member of nursing's national honor society, Sigma Theta Tau International.



## John Beilenson

John Beilenson is President of Strategic Communications and Planning, a private consulting firm that uses communications as a vehicle to transform non-profit and public institutions, drive changes in professional practice, and affect social policy.

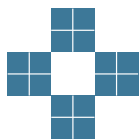
For more than a decade, he has provided communications consulting, strategic planning, training, web development and writing services while developing a specialty in aging research, geriatrics, and aging issues. Current or recent clients include the American Federation for Aging Research, the John A. Hartford Foundation, the Hartford Geriatric Social Work Practicum Development Program at the New York Academy of Medicine, The Mather Institute on Aging, Grantmakers in Aging, the AdvantAge Initiative of the Visiting Nurse Service of New York, DOROT, and the Institute for Medicare Practice. He is also the Project Director of Infoaging.org, a Web site sponsored by the American Federation for Aging Research.

Beilenson served as an instructor in Communications Studies at the University of North Carolina-Chapel Hill, teaching "Public Speaking" and the "Rhetoric of Social Movements." He also developed and co-directed the North Carolina Media Institute, which trains grass-roots activists in advocacy and communications skills.

Beilenson holds a Master's in Communications Studies from the University of North Carolina at Chapel Hill and an A.B. from Harvard University.

# Building Academic Geriatric Nursing Capacity

---



The *Building Academic Geriatric Nursing Capacity* Program is one crucial cornerstone in a nationwide movement to build strength and capacity within geriatric nursing education and practice!

Made possible by the vision and support of the John A. Hartford Foundation, this five-year funded program officially began in July 2000. Under the direction of Dr. Claire M. Fagin, former Dean of the University of Pennsylvania School of Nursing and an American Academy of Nursing Living Legend, this program aims to build geriatric nursing leaders through its Centers of Geriatric Nursing Excellence, its Scholars program, and other leadership building initiatives. It is also expected to increase the body of geriatric nursing research.

The five Centers of Geriatric Nursing Excellence demonstrate the highest level of commitment to the field, have both current experience and future potential to build the next generation of gerontological nurses, have outstanding capacity in research, practice and education, manifest leadership that transcends their own institution, and meet generally accepted criteria of excellence.

- Oregon Health & Science University  
Director: Patricia G. Archbold, DNSc, RN, FAAN
- University of Arkansas for Medical Sciences  
Director: Claudia Beverly, PhD, RN, FAAN
- University of California San Francisco  
Jeanie Kayser-Jones, PhD, RN, FAAN
- University of Iowa  
Meridean Maas, PhD, RN, FAAN
- University of Pennsylvania  
Neville Strumpf, PhD, RN, FAAN

The American Academy of Nursing serves as the Coordinating Center for this initiative. Ada Sue Hinshaw, President of the Academy in 2000, championed this partnership because “a scholarly organization that values gerontology, knowledge generation, development of scholars, and the need to inform health policy as well as nursing practice was required to facilitate this endeavor.”

Building Academic Geriatric Nursing Capacity Scholars Program operates within a larger network of John A. Hartford Foundation Geriatric Nursing Initiatives including: The Institute for Geriatric Nursing at New York University, plus the Enhancing Geriatric Nursing at the Baccalaureate and Advanced Practice Levels at the American Association of Colleges of Nursing (AACN). These and future programs provide the basis upon which will rise a gold – standard – model of geriatric nursing education and practice. Building Academic Geriatric Nursing Capacity Scholars Program will select the fourth cohort of scholars in 2004. Applications for these scholarships are available in PDF format on the program’s website; [www.geriatricnursing.org](http://www.geriatricnursing.org). Pre-doctoral and Post-doctoral applications are due December 15, 2003 and the Administrative/MBA scholarship applications are due May 1, 2004.

<i>Name</i>	<i>Title/Institution</i>	<i>Email Address</i>
<b>AACN-Creating Careers Scholars (Continued)</b>		
Anna Meidinger Novak	University of Minnesota	annie112875@msn.com
Cathy Mercado	Seattle Pacific University	catmercado@yahoo.com
Ruth Michels Eschenauer	Oregon Health Sciences University	rem231@yahoo.com
Debra Minchow	Oregon Health Sciences University	debra541@caszo.net
Karen Nibblett	Oregon Health Sciences University	nibblett@ohsu.edu
Cynthia Parker	University of Minnesota	park0689@umn.edu
Sherry Peng	University of California Los Angeles	sherrypeng2004@netscape.net
LaShanda Penn	Duke University	lbpenn@triad.rr.com
Joanne Leila Pinner	Seattle Pacific University	pinnej@yahoo.com
Kristin Sagebiel	University of Texas Health Science Center at San Antonio	sagebiel@uthscsa.edu
Kathryn Smith	Oregon Health Sciences University	smikathr@ohsu.edu
Renaee Steele	University of Minnesota	stee0030@umn.edu
Maia Syfers	University of Washington	msyfers@u.washington.edu
Joseph Tanifor	University of California Los Angeles	jtanifor@earthlink.net
Madonna Valencia	University of California at San Francisco	Madonna_valencia@chnsf.org
Sara Washa	University of Texas Health Science Center at San Antonio	washa@uthscsa.edu
Heather Wendorf	University of Minnesota	wend0137@umn.edu

<b>AACN-Creating Careers PIs</b>		
Donna Algase	University of Michigan	dalgase@umich.edu
Ruth Craven	University of Washington	ruthc@u.washington.edu
Laurie Dodge	University of Texas Health Science Center at San Antonio	dodgel@uthscasa.edu
Terri Harvath	Oregon Health Sciences University	harvatht@ohsu.edu
Elizabeth Macera	University of California at San Francisco	lizmacera@nursing.ucsf.edu
Eleanor McConnell	Duke University	mcon002@mc.duke.edu
Beverly Roberts	Case Western Reserve University	beverly.roberts@case.edu
Neville Strumpf	University of Pennsylvania	strumpf@nursing.upenn.edu
Martha Worchester	Seattle Pacific University	marthaw@spu.edu

<b>Hartford Institute Scholars</b>		
Cynthia Beel-Bates	University of Michigan	cabb@umich.edu
Rose Ann DiMaria-Ghalili	West Virginia University	rdimaria@hsc.wvu.edu
Kimberlee Gretebeck	University of Michigan	kagreteb@umich.edu



## **Claudia Beverly, PhD, RN, FAAN**

Claudia Beverly received her PhD in nursing from the University of Tennessee, Memphis, Tennessee in Health Services Research in Community Based Care for Older Adults. Currently, she serves as Associate Professor, College of Nursing; the Associate Director, Donald W. Reynolds Center on Aging, Vice Chair for Programs, Department of Geriatrics; College of Medicine, and Director of the Arkansas Rural Aging Initiative, Donald W. Reynolds Center on Aging. Dr. Beverly is also the Director of the Hartford Center for Gerontological Nursing Excellence. A published author, national presenter, instructor for UAMS and registered nurse, she is a member of the American Geriatrics Society and Gerontological Society of America. She is the recipient of various award including selected in the first cohort, Robert Wood Johnson Nurse Executive Fellowship and the UAMS Faculty Service Award. Her most recent appointment is the National Advisory Council on Nurse Education and Practice of the Health Resources and Services Administration by Donna Shalala, Secretary of Health and Human Services.



## **Sarajane Brittis, PhD**

Sarajane Brittis joined the John A. Hartford Foundation as a Program Officer in January 2001. She oversees the portfolio of geriatric nursing projects to which the Foundation has committed close to \$35 million. Before joining the Foundation, she worked in community long-term care for five years. She was the inaugural director of Village Center for Care's two adult day health care programs in New York City, where she was responsible for their creation, opening, and day-to-day operations.

Dr. Brittis has a strong background in the study of quality of care in nursing homes and community care settings. Her focus is on translating research into everyday practice with specific emphases on quality of care, organizational behavior and staff/resident/administration relationships. Having conducted her research in New York, England and Japan, she also has concentrated on the cross-cultural aspects of care delivery in multiple settings as well as cultural attitudes towards old age.

After receiving her B.A. degree in Psychology and English from Wellesley College, Dr. Brittis received a Thomas J. Watson Fellowship to study attitudes towards old age in London, England and Tokyo, Japan. She received her M.Sc. degree in Sociology from Oxford University in England and her PhD degree in Sociology from Case Western Reserve University.

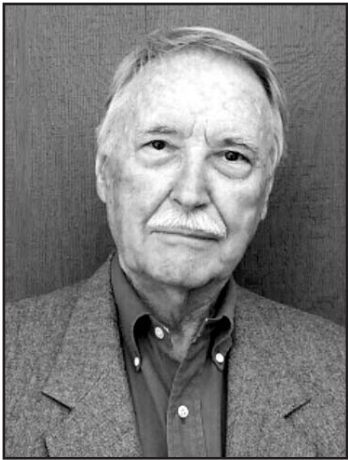


## **Linda Burnes Bolton, DrPH, RN, FAAN**

Dr. Linda Burnes Bolton is Vice President and Chief Nursing Officer of Cedars-Sinai Health System and Research Institute, Los Angeles, California. Her professional experience includes positions held as staff nurse, clinical nurse specialist, public member of government advisory boards, healthcare executive, community and public health nurse, university faculty and consultant. She holds graduate faculty appointments at the University of California, Los Angeles, University of California, San Francisco and California State University, Los Angeles.

She serves on various national, regional and local health boards and committees and editorial boards and she is the author of several articles, books, book chapters, videos and audiotapes. She is the co-developer of the National Black Nurses Association Community Collaboration Model. The model has been tested and is currently utilized in over one hundred communities throughout the United States and as a framework for improving community health. She is the recipient of numerous awards and honors in recognition of her achievements in promoting diversity in the health professions, models of care delivery, and health care improvement.

Dr. Burnes Bolton holds a bachelors of science in nursing from Arizona State University, a masters in nursing, masters in public health and doctorate in public health from the University of California, Los Angeles. She is a Fellow of the American Academy of Nursing. Dr. Burnes Bolton is committed to improving access to health care and the health status for all members of society through research, innovation and advocacy.



## Lamar Carter, MBA

Lamar Carter has been a member of the Advisory Council of the Center for A Science of Hope for over 15 years and is founder of Hope Consulting Services, a featured activity of the Center. He is past president of ICIS, the nonprofit parent organization of which Center for A Science of Hope is a part. In his early career, Mr. Carter was employed in human resources in major international corporations. For over 40 years, he has been an organization and management consultant in public and private sectors, in the U.S. and over 30 other countries.

His consulting experience has included the fields of management/executive development, organizational systems improvement, human resources and issues of ethnic and cultural diversity. Public sector clients in the U.S. have included the Presbyterian Church USA and Delta Sigma Theta, Inc. Recently, he served as a member of faculty of The Leadership Institute of National Council of Negro Women. Earlier, as Visiting Professor by Harvard Business School appointment, he taught the MBA course on organization behavior at the Central American School for Business Administration in Nicaragua.



## Jacqueline Dunbar-Jacob, PhD, RN, FAAN

Jacqueline is the Dean at the University of Pittsburgh School of Nursing, as well as Professor of Nursing, Epidemiology and Occupational Therapy, and the Director of the School of Nursing's Center for Research in Chronic Disorders.

She received a BSN from Florida State University, master's degree in psychiatric nursing from University of California at San Francisco, and a PhD in counseling psychology from Stanford University. Her research career spans the last 24 years, funded mostly by the National Institutes of Health, and most recently funded by the National Science Foundation. She has been involved in the study of patient adherence to treatment in individual studies and multi-center trials, addressing a variety of patient populations including rheumatological conditions, cardiovascular risk factors, diabetes, HIV/AIDS, cancer screening, depression, and transplantation.

Dr. Dunbar-Jacob is currently, President-elect of the Academy of Behavioral Medicine Research and former President of the Society of Behavioral Medicine. She is a fellow in the Society for Behavioral Medicine, the American Academy of Nursing, and the Academy for Behavioral Medicine Research, the American Psychological Association and the American Heart Association. In 2000, Dr. Dunbar-Jacob was appointed to National Advisory Council for the National Institute of Nursing Research. And in 2001, she was granted the Chancellor's Distinguished Research Award at the University of Pittsburgh for her past and current work.



## Sister Karin Dufault, SP, PhD, RN

Karin Dufault, a member of Sisters of Providence religious community, is Vice President, Mission Leadership for Providence Health System. She most recently served as full time Chairperson of the Board of Directors of the Providence Health System and served as Acting President and CEO. Providence Health System is a not-for-profit organization extending across a four-state area – from Alaska through Washington, Oregon, and into Southern California.

Sister Karin served as Administrator of St. Elizabeth Medical Center - now known as Providence Yakima Medical Center. Prior to this, she was Assistant Administrator for Patient Care Services at Providence Medical Center in Portland and also responsible for the oncology and gerontology programs. Before assuming the Nurse Executive role, she served as Clinical Specialist and Nurse Researcher at Providence Portland after completing graduate school.

Sister Karin earned undergraduate degrees in social science (B.A) and nursing (B.S.N.) from Seattle University, a Master's Degree in Medical/Surgical Nursing and a doctorate from Case Western Reserve University. She completed the Fellows Program in Management for Nurse Executives at the Wharton School, University of Pennsylvania. Sister Karin lectures nationally on a wide range of health care issues, published extensively and is the recipient of numerous awards and citations.

**Name****Title/Institution****Email Address****2003 BAGNC Scholars (Continued)****Pre and Postdoctoral**

Karen Rose	University of Virginia & University of Iowa	Kmr5Q@virginia.edu
Marianne Smith	University of Iowa	Msmith1@netins.net
Pao-Feng Tsai	University of Arkansas for Medical Sciences	tsaipaofeng@uams.edu

**MBA**

Bonnie Benetato	American University	Bonnie.Benetato@verizon.net
Therese Narzikul	Villanova University	Therese.Narzikul@villanova.edu

**BAGNC Mentors**

Cornelia Beck	University of Arkansas for Medical Sciences	beckcornelia@uams.edu
Kathleen Buckwalter	University of Iowa	kathleen-buckwalter@uiowa.edu
Liz Capezuti	New York University	ec65@nyu.edu
Marquis Foreman	University of Illinois at Chicago	mdforemn@uic.edu
Ann Horgas	University of Florida	ahorgas@nursing.ufl.edu
Rebecca Johnson	University of Missouri – Columbia	rajohnson@missouri.edu
Sarah Kagan	University of Pennsylvania	skagan@nursing.upenn.edu
Eleanor McConnell	Duke University	mcon002@mc.duke.edu
Lillian Nail	Oregon Health & Sciences University	naill@ohsu.edu
Linda Phillips	University of Arizona	Phillips@nursing.arizona.edu
Barbara Resnick	University of Maryland	bresnick@umaryland.edu
Kathy Richards	University of Arkansas for Medical Sciences	richardskathy@uams.edu
Terry Richmond	University of Pennsylvania	trryr@nursing.upenn.edu
Anne Skelly	University of North Carolina at Chapel Hill	askelly@email.unc.edu
Alexa K. Stuijbergen	University of Texas at Austin	astuijbergen@mail.utexas.edu
Toni Tripp-Riemer	University of Iowa	toni-reimer@uiowa.edu
Karen Talerico	Oregon Health & Sciences University	talerico@ohsu.edu
Christine Williams	University of Miami	clw023@bellsouth.net

**AACN-Creating Careers Scholars**

Veronica Abercrombia	University of California at San Francisco	krumbum13@aol.com
Margaret Brickley	Northeastern University	brickley@bu.edu
Faviola Cagle	Duke University	rwcagle@bellsouth.net
Wendy Cheng	Yale University	wendy.cheng@yale.edu
Carol Civello	Northeastern University	c.civello@neu.edu
Ana Consuelo Sampera	University of California at San Francisco	acsampera@bcglobal.net
Cecile Davis	George Mason University	nadokids@aol.com
Peggy Dunton	University of Minnesota	dunt0004@umn.edu
Paul Fanucchi	University of Texas Health Science Center at San Antonio	pfanucchi@stmarytx.edu
Sarah Gilbert	Radford University	bicycle@i-plus.net
Stacey Green	University of California at Los Angeles	staceygreenRN@sbglobal.net
Cathy Harrington	Wilkes University	CathyH502@aol.com
Jennifer Hillyer	University of California at Los Angeles	jqhillyer@adelphia.net
Stacy Kramer	Rush University	Stacy_Kramer@rush.edu
Allison Lood	University of Minnesota	lood2830@hotmail.com
Esperanza Lucer Sorongon	University of California at San Francisco	espie_sorongon@chnsf.org

**Name****Title/Institution****Email Address****2002 BAGNC Scholars****Pre and Postdoctoral**

Emelia Amoako	University of North Carolina at Chapel Hill SON	amoako@email.unc.edu
Beth Barba	Duke University School of Nursing	beth_barba@uncg.edu
Charles Buscemi	University of Miami School of Nursing	cbuscemi@bellsouth.net
Howard Butcher	University of Iowa College of Nursing	howard-butcher@uiowa.edu
Patricia Coleman	University of Rochester School of Nursing	pdcolema@syr.edu
Deanna Gray-Miceli	University of Pennsylvania School of Nursing	deannagm@nursing.upenn.edu
Karen Greco	Oregon Health & Sciences University	k.greco4@verizon.net
Judith Hertz	Northern Illinois University SON &	jhertz@niu.edu
Karyn Holm	University of Illinois at Chicago	kholm1@depaul.edu
Gwenneth Jensen	University of Iowa College of Nursing	gwennetha@hotmail.com
Alison Kris	University of California San Francisco SON	akris@itsa.ucsf.edu
Sue McLennon	University of Florida College of Nursing	mclenn@nursing.ufl.edu
Cheryl Monturo	University of Pennsylvania	monturo@nursing.upenn.edu
Diane Norcio	University of California San Francisco SON	diane_norcio@hotmail.com
Lori Popejoy	University of Missouri-Columbia	popejoyl@health.missouri.edu
Debra Schutte	University of Iowa College of Nursing	debra-schutte@uiowa.edu
Nancy Stotts	University of California San Francisco	nancy.stotts@nursing.ucsf.edu
Kristine Talley	University of Minnesota School of Nursing	carl0106@umn.edu
Laura Wagner	Emory University School of Nursing	lwagner@emory.edu
Cora Zembrzuski	New York University	coraDZ@aol.com

**MBA**

Denise Jones-Baucke	University of Washington	lynettejones@comcast.net
Elizabeth Miller	University of Pennsylvania Wharton School of Business	pherson@wharton.upenn.edu

**2003 BAGNC Scholars****Pre and Postdoctoral**

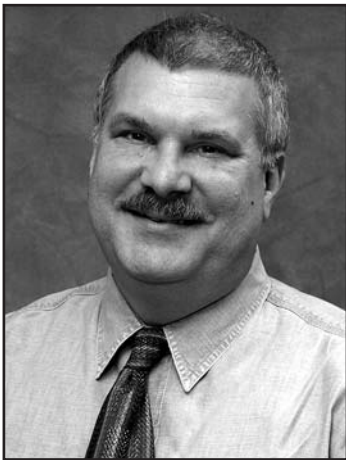
Ceanne Alvine	University of Arizona	ceanne@nursing.arizona.edu
Donald Bailey	Duke University	chip.bailey@duke.edu
Michele Balas	University of Pennsylvania	balasm@nursing.upenn.edu
Lazelle Benefield	Texas Christian University	L.Benefield@tcu.edu
Catherine Cole	University of Arkansas for Medical Sciences	cscole@uams.edu
Margaret Crighton	University of Pennsylvania	crighton@nursing.upenn.edu
Gwynn Davis	University of Arkansas for Medical Sciences	G.Davis@uams.edu
Amanda Floetke	University of Florida	floetke@ufl.edu
Janice Foust	University of Pennsylvania	janice.foust@unh.edu
Elizabeth Galik	University of Maryland	galikb@emaseniorcare.org
Carla Hagen	Oregon Health & Sciences University	hagenc@ohsu.edu
Tara Harriger	University of California at San Francisco	tharrige@itsa.ucsf.edu
Tracie Harrison	University of Texas at Austin	traciec@tex1.net
Lisa Kelley	University of Iowa	lisa-kelley@uiowa.edu
Helen Lach	Saint Louis University	lachh@slu.edu
Jeannette O'Brein	Oregon Health & Sciences University	obreinje@ohsu.edu
Barbara Rakel	University of Iowa Hospitals and Clinics	barbara-rakel@uiowa.edu



## Claire M. Fagin, PhD, RN, FAAN

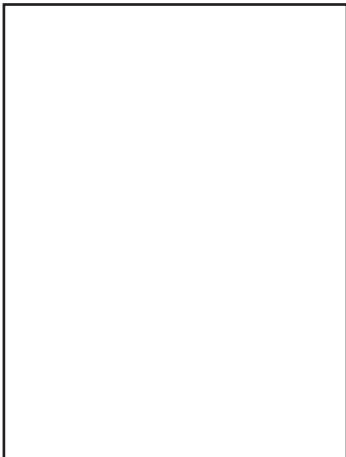
Dr. Claire M. Fagin's remarkable nursing career blends her commitment to professional health and nursing issues with her interest in consumer health. The nursing profession as well as consumers benefit from her research, publications and leadership. By the time Dr. Fagin completed her 15 year deanship at the University of Pennsylvania School of Nursing, the school was the highest ranking school of nursing in the country, federal research support was in the top three, and all standing faculty were Fellows in the American Academy of Nursing. She then served as the first woman Interim President of an Ivy League University from July 1, 1993 to June 30, 1994.

Beyond the halls of academia Dr. Fagin served and continues to serve on many corporate boards, as a consultant to foundations and also adds the role of Program Director for the John A. Hartford Foundation's Building Academic Geriatric Nursing Capacity Scholars Program.



## Marquis D. Foreman, PhD, RN, FAAN

Dr. Foreman is an associate professor in the Department of Medical-Surgical Nursing, and Clinical Scientist, University of Illinois at Chicago Medical Center. He is an internationally recognized expert on nursing care issues of the acutely and critically ill older adult, with an emphasis on the prevention and treatment of delirium. As such he consults internationally with various health care providers. He is active in the American Geriatrics Society, the Gerontological Society of America, the Midwest Nursing Research Society, and Sigma Theta Tau, International. He is a fellow of the American Academy of Nursing, and has received numerous awards for his work, including the Mary Opal Wolanin Award for Excellence in Gerontological Clinical Nursing Research, the Harriet H. Werley New Investigator Award, and the Mosby-Cameo Nursing Research Award for his work on delirium in the hospitalized elderly.



## Terry Fulmer, PhD, RN, FAAN

Dr. Fulmer is The Erline Perkins McGriff Professor and Head, Division of Nursing, Steinhardt School of Education, New York University, is the Co-Director for The John A. Hartford Foundation Institute for Geriatric Nursing, and Director of the Consortium of New York Geriatric Education Centers (CNYGECs). She is also the Principal Investigator for the Geriatric Interdisciplinary Team Training (GITT) Program. She received her bachelor's degree from Skidmore College, her master's and doctoral degrees from Boston College and her Geriatric Nurse Practitioner Post-Master's Certificate from NYU. Dr. Fulmer's program of research focuses on acute care of the elderly and specifically, elder abuse and neglect. Her research work on "Dyadic Vulnerability/Risk Profiling for Elder Neglect" is funded from the National Institute on Aging in partnership with the National Institute of Nursing Research. Dr. Fulmer has received the status of Fellow in the American Academy of Nursing, Gerontological Society of America, and the New York Academy of Medicine. She completed a Brookdale National Fellowship and is a Distinguished Practitioner of the National Academies of Practice. Her publications include over 125 articles, 50 chapters and 16 books.



## **Deanna Gray-Miceli, DNSc, RN, CS, CRNP**

Dr. Deanna Gray-Miceli is a 2002 John A. Hartford Post-Doctoral Scholar studying at the University of Pennsylvania and an Associate Professor at the College of Nursing, Seton Hall University. As a Gerontological Nurse Practitioner for over 20 years, Deanna has provided primary care to frail older adults in nursing homes and ambulatory geriatric settings. For the past 15 years, her career has focused on care of elders who fall including program development, directorship of an outpatient Fall Assessment Program at the University of Medicine and Dentistry-School of Medicine, clinical research and educational presentations to consumer and professional audiences. She has authored several clinical publications and book chapters regarding care of frail elders.

Deanna's doctoral dissertation, "Changed life: a phenomenological exploration of the meaning of serious falls to older adults" is the basis for her post-doctoral work on the development and validation of a post-fall assessment tool for use in nursing homes. Such a tool could be especially valuable in testing interventions aimed at fall reduction and injury prevention, as well as a catalyst for policy change in nursing homes. In 2003, Dr. Gray Miceli became a Fellow of the American Academy of Nurse Practitioners.



## **Karen Greco, RN, MN, ANP, CTM**

Karen Greco is a doctoral student at Oregon Health & Science University in Portland, Oregon. Her dissertation focuses on Mammography Decision-Making in Older Women With a Family History of Breast Cancer. As an oncology nurse practitioner she blends her clinical expertise in gerontology, oncology, and genetics by focusing on diseases with a hereditary component such as cancer that affect older adults. She co-chairs the Professional Practice Committee for the International Society of Nurses in Genetics, serves on the Board of Directors for the Genetic Nursing Credentialing Commission, and is recipient of the 2003 Founders Service Award from the International Society of Nurses in Genetics. Her publications include professional journal articles, book chapters, and abstracts.

She is a 2002-2004 John A. Hartford Building Academic Geriatric Nursing Capacity Pre Doctoral Scholar and an Oncology Nursing Society Pre Doctoral Scholarship Awardee.

Karen has given numerous presentations nationally and internationally. She has been a member of Toastmasters International for several years, has attained her Competent Toastmaster Award and is working toward her Advanced Toastmaster Award.



## **Margaret Grey, DrPH, FAAN, CPNP**

Dr. Grey is the Independence Foundation Professor of Nursing and Associate Dean for Research Affairs at the Yale School of Nursing. She holds a bachelor's degree from the University of Pittsburgh, an MSN from Yale University, and a Doctorate in Public Health from Columbia University.

A pediatric nurse practitioner with expertise in diabetes, Dr. Grey's research focuses on the natural history of adaptation to chronic illness in childhood, especially children with diabetes mellitus. She has been principal investigator for grants totaling over \$10 million. A recent research project won the Applied Nursing Research Award from the American Nurses Association Council on Nursing Research.

Dr. Grey is a recipient of numerous awards and a Distinguished Fellow of the National Association of Pediatric Nurse Associates and Nurse Practitioners (NAPNAP). As President of NAPNAP, Dr. Grey assisted in developing their research agenda for pediatric primary care. She has served on NIH and AHCPH review panels and as chairperson of the Nursing Science Review Committee for the National Institute of Nursing Research.

She was a Robert Wood Johnson Executive Nurse Scholar, and is currently a member of the National Advisory Council for Nursing Research at the National Institutes of Health and the National Board of Directors of the American Diabetes Association.

<i>Name</i>	<i>Title/Institution</i>	<i>Email Address</i>
<b>CGNE Administrators</b>		
Cris Chater	University of California at San Francisco	cris.chater@nursing.ucsf.edu
Bonnie Kinkead	University of Iowa	bonnie-kinkead@uiowa.edu
Sandie Lubin	University of Arkansas for Medical Sciences	lubinsandraa@uams.edu
Monda Spool	University of Pennsylvania	mspool@nursing.upenn.edu
Diana White	Oregon Health & Sciences University	whitedi@ohsu.edu
<b>American Association of Colleges of Nursing (AACN)</b>		
Annie Alesandrini	Project Assistant	aalesand@aacn.nche.edu
Geraldine (Polly) Bednash	Executive Director of AACN	aberry@aacn.nche.edu
Joan Stanley	Director of Education Policy	jstanley@aacn.nche.edu
Eileen Sullivan-Marx	Chair, Creating Careers/Advisory Committee	marx@nursing.upenn.edu
Deirdre Thornlow	Director, Gerontology Project	dthornlo@aacn.nche.edu
<b>The John A. Hartford Foundation's Institute for Geriatric Nursing</b>		
Terry Fulmer	Co-Director	terrfulmer.don@nyu.edu
Elaine Gould	Director for Programs	elaine.gould@nyu.edu
Mathy Mezey	Director	mm5@nyu.edu
<b>Nursing School Geriatric Investment Program</b>		
Donna Algase	University of Michigan	dalgase@umich.edu
Ruth Craven	University of Washington	ruthc@u.washington.edu
Vaunette Fay	University of Texas Houston Health Sciences Center	vaunette.p.fay@uth.tmc.edu
Bethel Powers	University of Rochester	bethel_powers@urmc.rochester.edu
Joyce Rasin	University of North Carolina Chapel Hill	jrasin@email.unc.edu
Beverly Roberts	Case Western Reserve University	beverly.roberts@case.edu
Nancy Watson	University of Rochester	nancy_watson@urmc.rochester.edu
Jean Wyman	University of Minnesota	wyman002@umn.edu
<b>The Measurement Group</b>		
George Huba	President	ghuba@themeasurementgroup.com
Lisa Melchior	Vice President	lmelchior@themeasurementgroup.com
Le Quach	Research Associate	lquach@themeasurementgroup.com
<b>2001 BAGNC Alumni</b>		
Stewart Bond	UNC Chapel Hill School of Nursing	bond@email.unc.edu
Joyce Chan	University of California San Francisco SON	jchan@itsa.ucsf.edu
Jennifer Hagerty Lingler	University of Pittsburgh SON	linglerjh@upmc.edu
Janet Mentès	University of California Los Angeles SON	jmentès@sonnet.ucla.edu
Diana Lynn Woods	University of California Los Angeles SON	lwoods@sonnet.ucla.edu



# Attendees



## *Name*

## *Title/Institution*

## *Email Address*

### John A. Hartford Foundation

Sarajane Brittis	Program Officer	sbrittis@jhartfound.org
Donna Regenstreif	Senior Program Officer	diregenstreif@jhartfound.org
Corinne Rieder	Executive Director	

### American Academy of Nursing

Patty Franklin	Program Manager	pfrankli@ana.org
Yolanda Johnson	Administrative Assistant	yjohnson@ana.org
Joan Shaver	President	jshaver@uic.edu

### BAGNC Advisory Committee & CGNE Directors\*

Pat Archbold*	Director, Oregon Health & Science University	archbold@ohsu.edu
Geraldine (Polly) Bednash	Executive Director of AACN	aberry@aacn.nche.edu
Claudia Beverly*	Director, University of Arkansas for Medical Sciences	cjbeverly@uams.edu
Claire Fagin	Program Director BAGNC/NSGIP	cfagin@att.net
Jeanie Kayser-Jones*	Director, University of California San Francisco	jeanie.kayser-jones@nursing.ucsf.edu
Meridean Maas*	Director, University of Iowa	meridean-maas@uiowa.edu
Angela McBride	Indiana University School of Nursing	amcbride@iupui.edu
Mathy Mezey	JAHF Institute for Geriatric Nursing	mm5@nyu.edu
Neville Strumpf*	Director, University of Pennsylvania	strumpf@nursing.upenn.edu
Carolyn Williams	Director, University of Arkansas for Medical Sciences	cawill00@pop.uky.edu



## Jessie Gruman, PhD

Dr. Gruman's career has focused on the application of scientific knowledge to effective solutions to the problems of health and illness. Gruman graduated from Vassar College and received her PhD in social psychology from Columbia University.

Dr. Gruman is the president and founding executive director of the Center for the Advancement of Health, a Washington-based policy institute originally funded by the John D. and Catherine T. MacArthur Foundation and the Nathan Cummings Foundation to translate health research into effective policy and practice.

Since its start in 1992, Gruman has built the Center into a well-funded non-profit, ensuring that evidence on social, behavioral and economic factors are used to prevent, manage, and treat disease. In addition to support from the MacArthur and Cummings Foundations, the Center currently receives funding from the Robert Wood Johnson Foundation, W.K. Kellogg Foundation, Soros Foundation, the Burroughs Wellcome Fund, the American Cancer Society, and other national health philanthropies.

Formerly at the National Cancer Institute, Gruman directed the initial phase of the American Stop Smoking Intervention Study for Cancer Prevention (ASSIST). Prior to government service, she served as the national director for public education at the American Cancer Society and the manager of health promotion at the AT&T corporate headquarters.



## Martha N. Hill, RN, PhD, FAAN

Dr. Martha N. Hill, Dean of the Johns Hopkins University School of Nursing and professor and director of the Center for Nursing Research at the school, holds joint appointments in the Bloomberg School of Public Health and the School of Medicine. Dr. Hill received her BS degree in nursing from Johns Hopkins University, her master's degree from the University of Pennsylvania, and her doctoral degree in behavioral sciences from the Johns Hopkins University School of Public Health.

Dr. Hill, the 1997-1998 president of the American Heart Association, is a Fellow in the American Academy of Nursing and a member of the Institute of Medicine of the National Academy of Sciences. She served as the Co-vice chair of the recently published IOM Committee on Understanding and Eliminating Ethnic and Racial Disparities in Health Care. Currently, and is serving on the National Academy of Sciences National Research Council study committee on the organizational structure of the NIH.

Dr. Hill is internationally known for her work and research in preventing and treating hypertension and its complications, particularly among young, urban African American men. She is an active investigator and consultant on NIH funded clinical trials, has published extensively and serves on numerous review panels, editorial boards, and advisory committees.



## Rita A. Jablonski, PhD, RN, ANP-BC

Dr. Jablonski was in the first John A. Hartford Foundation *Guiding Academic Geriatric Nursing Capacity* cohort. She graduated from the University of Virginia in 2003. Her dissertation, "Transfers from Nursing Homes to Emergency Departments," was also funded by a National Research Service Award. She is currently an assistant professor at the School of Nursing, Virginia Commonwealth University. In addition to her faculty position, Dr. Jablonski has a clinical appointment with the Department of Internal Medicine, Long-Term Care, Virginia Commonwealth University Health Systems. In this capacity she works with a geriatrician to provide primary care to nursing home residents.

Dr. Jablonski has recently submitted a study proposal as part of a School of Nursing center grant, "Measuring the Oral Health of Nursing Home Elders." Her dissertation was accepted for a paper presentation at the upcoming Southern Nursing Research Society meeting. She continues to work with the Department of Gerontology at VCU and the Virginia Geriatric Society on aging-related projects.



## Jeanie Kayser-Jones, PhD, RN, FAAN

Dr. Kayser-Jones is a professor in the Department of Physiological Nursing, School of Nursing, and the Medical Anthropology Program, School of Medicine, at the University of California, San Francisco. Dr. Kayser-Jones holds a doctorate in Medical Anthropology from the University of California, Berkeley, a Master of Science degree in nursing from the University of California, San Francisco, and a Bachelor of Science degree, *cum laude*, from the University of Colorado.

Dr. Kayser-Jones is recognized nationally and internationally for her rigorous, systematic investigation of problems that influence the quality of care and the quality of life of nursing home residents. Her initial research, an ethnographic, cross-cultural comparative study of institutionalized elders in Scotland and the United States, was published by the University of California Press in a book entitled, *Old, Alone and Neglected: Care of the Aged in the United States and Scotland*.

Dr. Kayser-Jones is a Fellow of the Gerontological Society of America, the American Academy of Nursing, and the American Anthropological Society. She has received numerous awards for her research in nursing homes. She has published in nursing, gerontology, social science, medicine, and law journals, as well as featured in numerous lay publications, on the radio, and on websites.



## Becca Levy, PhD

Dr. Levy is an Assistant Professor in the Department of Epidemiology and Public Health and the Department of Psychology at Yale University School of Medicine. She is affiliated with the Social and Behavioral Sciences Program, Chronic Disease Epidemiology Division and Yale Program and Aging. She received her doctoral training in Social Psychology, with a focus on the Psychology of Aging, from Harvard University. Prior to her current appointment, she was a National Institute of Aging NRSA Individual Postdoctoral Fellow in the Division on Aging and the Department of Social Medicine at Harvard Medical School. She recently received the Margret M. Baltes Early Career Award in Behavioral and Social Gerontology from the Gerontological Society of America, the Springer Award for Early Career Achievement on Adult Development and Aging from the American Psychological Association, and a Career Award from the National Institute on Aging. She was also awarded a Brookdale National Fellowship for Leadership in Aging. Dr. Levy's research has focused on the influence of psycho-social factors on cognitive and physical health in old age. Specifically, through a series of experimental studies, she has documented how older individuals' negative stereotypes of aging can lead to a number of detrimental changes, including a decline in memory performance, self-efficacy, will-to-live, and a heightened cardiovascular response to stress. Conversely, she has found that older individuals' positive stereotypes of aging can have a beneficial effect on these outcomes. Dr. Levy has been building on her experimental findings by examining: (1) whether older individuals' stereotypes of aging influence long-term health; and (2) if so, the mechanism by which this influence occurs.



## Meridean L. Maas, PhD, RN, FAAN

Dr. Meridean L. Maas is the Sally Mathis Hartwig Professor in Gerontologic Nursing Research, College of Nursing, The University of Iowa. Dr. Maas received her BSN and MA in Nursing from the University of Iowa and her doctorate in Sociology of Organizations from Iowa State University.

Dr. Maas' areas of scholarship and teaching are Nursing Administration and Gerontologic Nursing. She is currently Director of the JAHF Center of Geriatric Nursing Excellence, PI of a study testing the effectiveness of nursing interventions of elders with congestive heart failure and pneumonia; Co-PI of the Iowa Geriatric Education Center, Co-Director of the Gerontological Nursing Interventions Research Center and Director of its Regional Research Training Core. She also mentors students and fellows.

Dr. Maas' NIH funded research includes a study testing the effects of Family Involvement in Care intervention on outcomes for institutionalized persons with dementia, their family and staff caregivers plus studies to develop, classify, and validate patient outcomes that are sensitive to nursing interventions. She serves on 2 editorial boards, authored or edited several books - including *Nursing Diagnoses, Interventions, and Outcomes for Elders*, has numerous peer reviewed journal articles and book chapters in print. Dr. Maas received the Regents Award for Faculty Excellence at the University of Iowa in 1996/1997.



## **Mary K. Wakefield, PhD, RN, FAAN**

Dr. Mary Wakefield is Director and Professor of the Center for Rural Health at the University of North Dakota, School of Medicine and Health Sciences and Adjunct Professor at the University's College of Nursing.

Dr. Wakefield received her MSN and Doctor of Philosophy from the University of Texas, a BSN from the University of Mary, and was a Kodak Fellow in the Program for Senior Managers in Government at the John F. Kennedy School of Government, Harvard University.

Earlier, Dr. Wakefield served as Professor and Director of the Center for Health Policy at George Mason University, Chief of Staff for United States Senator Kent Conrad (D-ND) and Legislative Assistant and Chief of Staff to Senator Quentin Burdick (D-ND).

Dr. Wakefield serves on many health related advisory boards. She was appointed to the Institute of Medicine's Committee on Quality of Health Care in America, which produced the reports "To Err is Human" and "Crossing the Quality Chasm", the National Commission on Veteran's Affairs and served as co-chair of the Institute of Medicine's Committee Health Professions Education Summit.

Dr. Wakefield has presented nationally and internationally, authored numerous articles and columns and is on the editorial board of professional journals, including the Journal of Rural Health and Nursing Economics.

**We thank all of the speakers who  
dedicated their time and expertise  
to the 2003 Leadership Conference**



## Joan Shaver, PhD, RN, FAAN

Joan Shaver is currently Professor and Dean, College of Nursing at the University of Illinois at Chicago (UIC) and President-elect of the AAN. As well she is a member of the National Advisory Council for the NINR, NIH, a board member for Advocate HealthCare (the largest integrated health care system in the Chicago area). At UIC, Dr. Shaver serves as Co-director for the UIC National Center of Excellence in Women's Health Research Core. She was an invited member of the Institute of Medicine Committee on the Health Professions Education Summit for 2002, which issued a report: *Health Professions Education: A Bridge to Quality* in April, 2003.



## Neville E. Strumpf, PhD, RN, C, FAAN

Dr. Strumpf is the Edith Clemmer Steinbright Professor in Gerontology at the University of Pennsylvania School of Nursing. Known for her teaching expertise at all levels, Dr. Strumpf was the Director of the Gerontology Nurse Practitioner Program, which was named first nationally among gerontology programs in U.S. News & World Report rankings in 1998 and 2001. Currently, Dr. Strumpf is the Director of the Hartford Center of Geriatric Nursing Excellence and the Center for Gerontologic Nursing Science.

Dr. Strumpf is a widely acclaimed researcher, best known for work with colleague, Dr. Lois Evans. Their breakthrough research led to nation - wide reduction in the use of restraints for frail older people. Dr. Strumpf just completed a Robert Wood Johnson Foundation funded project to implement a model of palliative care in nursing homes, and is PI of an NIA funded study of falls prevention among inner city elderly.

Dr. Strumpf has received numerous honors for her contributions to the field of gerontology, including the American Nurses Association Gerontological Nurse of the Year, the Pennsylvania Nurses' Association Nursing Education Award, the Distinguished Alumni Award from New York University, and most recently the Doris A. Schwartz Gerontological Nursing Research Award from the Gerontological Society of America. She is the author or co-author of more than 100 articles, book chapters and books.



## Eileen M. Sullivan-Marx, PhD, RN, FAAN

Eileen is an associate professor at the University of Pennsylvania School of Nursing. She received her B.S.N. from the University of Pennsylvania, a M.S. from the University of Rochester School of Nursing, and holds a doctorate degree from the University of Pennsylvania.

With over 20 years experience in the nursing field and as a primary care nurse practitioner with a special interest in geriatrics, Dr. Sullivan-Marx has been on the forefront of new trends in nursing practice since 1980. She established innovative, model practices for nursing in multiple practice settings. She is a founder, advisor and consultant with the Gerontological Nursing Consultation Service at the University of Pennsylvania School of Nursing. She's been appointed to numerous national policy committees addressing quality of health care and payment issues for nurses, won several practice and research awards and was the Distinguished Alumni of the University of Rochester School of Nursing in 2001.

Dr. Sullivan-Marx's research focuses on outcomes of care for vulnerable older adults and includes demonstration of the effectiveness of nurse-managed programs, restraint reduction in nursing homes, and policy issues on access and payment for health care services. Through numerous publications, Dr. Sullivan-Marx disseminates research findings to improve practice and inform policy that improves care for older adults.



## Angela Barron McBride, PhD, RN, FAAN

Dr. McBride received her bachelor's degree in nursing from Georgetown University, her master's degree in psychiatric-mental health nursing from Yale University, and her PhD in developmental psychology from Purdue University. She is Distinguished Professor and University Dean Emerita at Indiana University School of Nursing, a multi-campus nursing school with offerings on eight IU campuses (Indianapolis, Bloomington, Columbus, Gary, Kokomo, New Albany, Richmond and South Bend). In keeping with her multidisciplinary interests, she is an Adjunct Professor in the departments of Psychology, Psychiatry, Women's Studies, and in Philanthropic Studies on Nursing's core campus of Indiana University-Purdue University at Indianapolis (IUPUI). During her tenure as dean, she also served as Senior Vice President for Academic Affairs-Nursing within Clarian Health Partners, one of the largest hospital networks in the United States. She is currently the AAN-ANF-IOM Scholar-in-Residence at the Institute of Medicine, The National Academies.



## Mathy Mezey, EdD, RN, FAAN

Dr. Mathy Mezey's distinguished career has focused on raising the standards of nurses caring for older adults and ensuring that people age in comfort and with dignity. Dr. Mezey received her undergraduate and graduate degrees in nursing from Columbia University.

As a professor at the University of Pennsylvania, she directed the geriatric nurse practitioner program and the Robert Wood Johnson Foundation Teaching Nursing Home Program. After joining the faculty at New York University's Division of Nursing, Dr. Mezey was named Independence Foundation Professorship of Nursing Education. Since 1996, Dr. Mezey has served as the Director of the JAHF Institute for Geriatric Nursing at NYU's Division of Nursing.

Dr. Mezey's has a long standing interest in bioethics research and education. With Nancy Dubler, she directs the Montefiore Medical Center NYU Nursing Certificate Program in Bioethics and the Medical Humanities. Dr. Mezey was a member of the Ethics Task Force of the Clinton Panel on Health Care Reform.

Among her many awards, Dr. Mezey has twice received the Geriatric Book of the Year Award by the *American Journal of Nursing*. She is a Fellow of the Gerontological Society of America and the American Academy of Nursing.



## Elizabeth McPherson Miller, MSN, CRNP

Elizabeth Miller is a John A. Hartford Foundation Building Academic Geriatric Nursing Capacity MBA Scholar. She will graduate from the Wharton School of Business with a Masters in Business Administration and concentration in Healthcare Management in May 2004. Ms. Miller received both her BSN and MSN, in the Adult & Geriatric Nurse Practitioner Programs, from the University of Pennsylvania, School of Nursing. Prior to attending Wharton, Elizabeth worked as a Nurse Practitioner with New Courtland Elder Services, serving in a number of roles, including project manager of a pain management program. In addition, she has many years of experience in oncology nursing. Most recently, she interned with HCR-ManorCare, working with 47 facilities in their Eastern Division on operational and quality improvement analysis. Upon completion of her degree she looks forward to a career specializing in long-term care operations.



## David J. Morse, MA

David Morse is Vice President for Communications at The Robert Wood Johnson Foundation (RWJF), the U.S.'s largest philanthropy devoted exclusively to improving health and health care. RWJF is among a handful of foundations that vigorously promote strategic communications as a principal means of affecting change. Prior to his appointment at RWJF, Morse was the Director of Public Affairs for The Pew Charitable Trusts.

Morse also served in several roles at the University of Pennsylvania, including Associate Vice President for Policy Planning, helping build the University's relations with the federal government and developing programs to advance its teaching, research, and service missions. He also led efforts to create new mechanisms for financing higher education and promoting tax policies that preserve incentives for charitable giving.

Morse developed legislation affecting higher education and cultural affairs while on the staff of the U.S. Senate Committee on Labor and Human Resources, taking a leave to direct the President's Task Force on the Arts and the Humanities. He received a B.A. from Hamilton College and an M.A. from The Johns Hopkins University. He serves on the boards of Charitable Accord, Inc. and the Communications Network, as well as on the Ad Council's Public Policy Advisory Committee, and teaches public policy at Penn's Graduate School of Education.



## Thomas Perls, MD

Dr. Perls is a physician and researcher in the study of aging at Boston University Medical School. As Associate Professor in Medicine and a Geriatrician he cares for older patients at Boston Medical Center. Since he first discovered that his centenarian patients were among his healthiest, Dr. Perls has become one of a handful of world's experts studying these exceptional human beings. For the past eight years he has directed the New England Centenarian Study (NECS). Funded by The Institute for the Study of Aging, The Ellison Medical Foundation, The Alzheimer's Association, and The National Institute on Aging, the NECS is the largest genetic and social study of centenarians and their families in the world.

As a scientific founder of the biotechnology company Centagenetix (now Elixir Pharmaceuticals), Dr. Perls is on the fast track to discovering these longevity enabling genes which could translate into the development of age-slowng and disease retarding drugs.

With multiple publications and presentations, Dr. Perls and the centenarian subjects have garnered a great deal of media attention including appearances on *The Today Show*, *Good Morning America*, the *Nightly News* programs, *Oprah!* and National Public Radio. Findings from the study are presented in his book, *Living to 100, Lessons in Maximizing Your Potential At Any Age*.



## Le Quach, MPH

Le Quach is a Research Associate at The Measurement Group LLC. A 2002 graduate of the Yale School of Public Health, Ms. Quach specializes in issues of healthcare access and the development of systems of care, as well as qualitative evaluation methods. Ms. Quach current coordinates various projects including: a) a HRSA funded outcomes study to document the long-term outcomes of 108 Special Projects of National Significance grantees who had projects starting between 1991 and 1997; b) a three-year Evaluation Center for the John A. Hartford Foundation Gerontological Nursing Initiative which supports 8 major projects with more than 60 subprojects; and c) a five-year Evaluation Center for the Nurse Competence in Aging project funded by The Atlantic Philanthropies and representing a strategic alliance between ANA, the American Nurses Credentialing Center (ANCC) and the John A. Hartford Foundation Institute for Geriatric Nursing to enhance the geriatric competence of nurses who belong to specialty nursing associations.



## Corinne H. Rieder, EdD

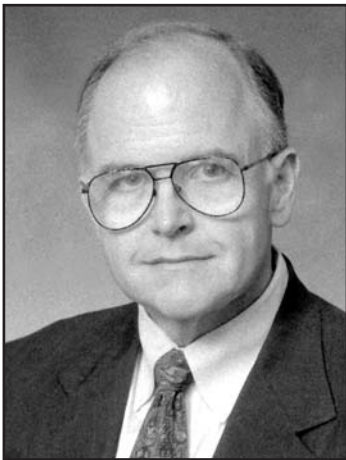
Dr. Rieder is executive director of the John A. Hartford Foundation in New York City. The Foundation's overall goal is to increase the nation's capacity to provide effective and affordable care to its rapidly aging population.

Dr. Rieder earned a B.A. from the University of California, Los Angeles, an Ed.M. and Ed.D. from Harvard University, and spent the early part of her career in Washington, DC, where she was an associate director of the National Institute of Education, a study director at the Office of Management and Budget, and advisor in education at the former Department of Health, Education and Welfare.

Prior to coming to Hartford, Dr. Rieder served as the corporate secretary of Columbia University, and earlier as the University's director of federal relations. Before joining Columbia, she was executive vice president and dean of Bank Street College of Education. She taught strategic planning at both institutions.

She also served as director of education planning for the New York City Planning Department and a Peace Corps Volunteer in the Dominican Republic.

Currently, she is on the boards of the New York Academy of Medicine, the American Federation for Aging Research, the Foundation of the American Geriatrics Society, the Merck Institute of Aging and Health, and Grantmakers in Health.



## William Scanlon, PhD

William Scanlon is the Director of Health Care Issues at the U.S. General Accounting Office (GAO). He has been engaged in health services research since 1975. Before joining GAO in 1993, he was the Co-Director of the Center for Health Policy Studies and an Associate Professor in the Department of Family Medicine at Georgetown University and had been a Principal Research Associate in Health Policy at the Urban Institute. His research has focused in particular on the Medicare and Medicaid programs, especially provider payment policies, and the provision and financing of long-term care services. Dr. Scanlon has published extensively and has served as a frequent consultant to federal agencies, state Medicaid programs, and private foundations. He has a PhD in Economics from the University of Wisconsin-Madison.



## Irene B. Seeland, MD

Dr. Irene Seeland is currently a Consultant Associate of Hope Consulting Services and a member of the Advisory Board of the Center for a Science of Hope. In the past 30 years she has held teaching and clinical appointments as a psychiatrist at Mt. Sinai Hospital Services, the College of Physicians and Surgeons/ Presbyterian Hospital and New York University Medical Center in New York City.

She was co-founder and co-administrator of The Door æ a multi-service center for adolescents in New York City, a nationally and internationally acknowledged model for integrated youth services. She developed and administered the center's Mental Health Services and Mental Health Training Component. She worked for 16 years closely with the Foundation for Thanatology, co-chairing several symposia, presenting papers and co-editing books for the Foundation. She had an extensive private praxis, focusing primarily on professional women's issues. She has published articles and book chapters in her field and has held workshops dealing with the issues of critically and terminally ill patients, their families and the staff, both in the U.S. and in Europe.

Her current interest is to encourage health service professionals to recognize and understand the vital role Hope plays in their clients' efforts to deal with their life challenges and to assist these professional to gain increasing skills in helping clients to draw upon Hope as an energizing force. Her interest also extends to helping professionals understand the vital role Hope plays in their own lives and professional environments.